

# Commercial Hardware Guide

**ASSA ABLOY**

The global leader in  
door opening solutions





## Scheduling Service

ASSA ABLOY has a skilled team of dedicated specifiers to help with all your door hardware specification needs. With such a variety of architectural hardware and locking solutions available, specifying the most appropriate product can be a challenge. Our architectural consultants will work with you to identify your needs and offer solutions on:

- Architectural Hardware
- Electric Locking
- Security
- Access Control
- Folding & Sliding
- Automatic Sliding Doors (Besam)



# Contents

Assa Abloy Openings Studio	2
Digital Door Locks	4
Brass Based Lever and Base Options	8
Velocity Range	15
Nero Collection	16
Artefact Range	17
Key in Knob and Key in Lever	19
Nightlatches	20
Detention Series	21
Pull Handles	22
Mortice Locks	24
Specification Guide	26
Electromechanical	27
Door Closers	31
Exit Devices	36
Keying	37
Fabricator Products	39
General	40

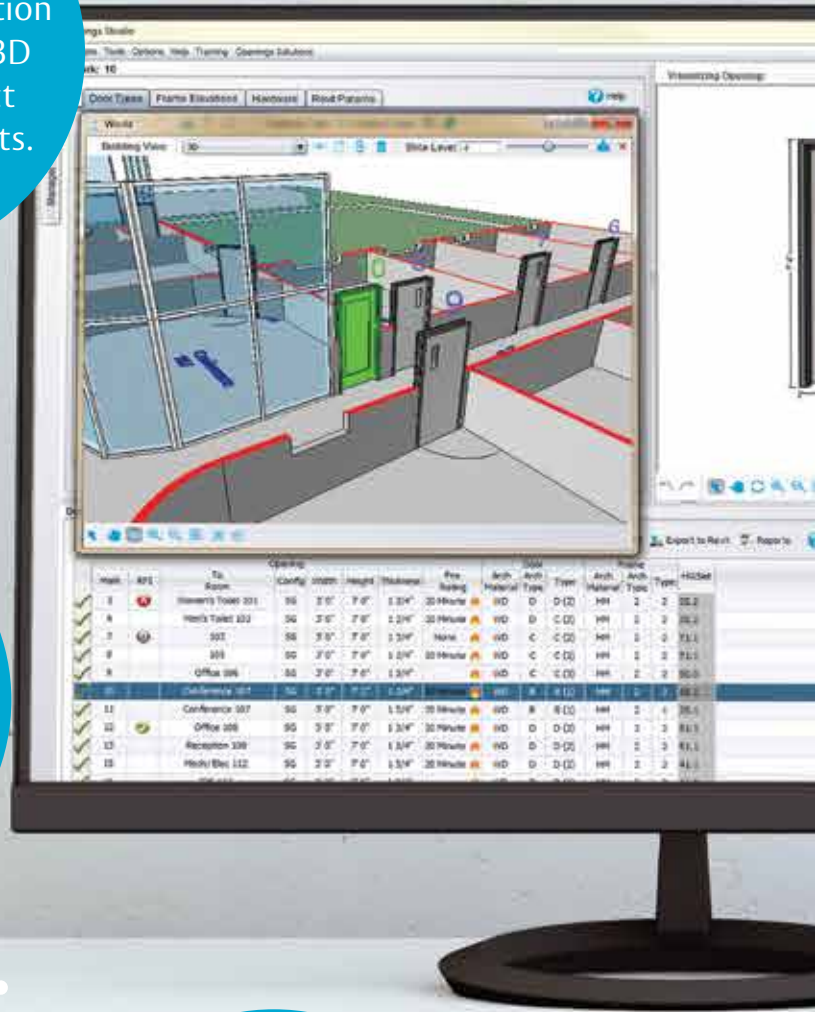
# Unlock your full potential

## With ASSA ABLOY Openings Studio

Produce three-part formatted specification section matching 3D models for project contract documents.

Compare material selections through a non-proprietary database that includes variable pricing options.

Make “complete openings” to produce doors, frames, hardware and specifications.





Integrate directly with BIM design software, such as Autodesk® Revit®.

Web-based, password protected modules accessible by architects, contractors, suppliers and facility end users.

Render complete openings, with hardware. Preview doors in 3D with the Building View tool.

Access manufacturer catalogues, technical data sheets, wiring diagrams, templates and more.

## Download Openings Studio

Visit **[OpeningsStudio.com](http://OpeningsStudio.com)** to download a copy. Need a demo? Our consultants are ready to help! Contact your Assa Abloy representative for more information.



## 3109+ Digital Door Lock



### Features:

- Various Access - by proximity card identification, PIN code or key for your convenience
- Easy registration of cards
- Scrambling code
- Mechanical override key
- Break-in alarm
- Automatic locking (optional)
- Anti-panic egress
- Safe handle (ideal for small children)
- Low battery warning and emergency powercontacts
- Remote control (optional)

### PRODUCT SPECIFICATION

Type	Mortice lock
Proximity card keys	4 (Max 40)
Mechanical keys	2
PIN code	6-12 digits
Finish	Stainless Steel
Door type	Timber / Aluminium
Door thickness	40-95mm
Backset	60mm / 70mm
Part number	SYDM3109PLUS/60 SYDM3109PLUS/70

## 4109+ Digital Door Lock



### Features:

- Various Access - by fingerprint verification, PIN code or key for your convenience
- One touch fingerprint verification method (easy scan)
- Scrambling code
- Mechanical override key
- Break-in alarm
- Automatic locking (optional)
- Anti-panic egress
- Safe handle (ideal for small children)
- Low battery warning and emergency powercontacts
- Remote control (optional)

### PRODUCT SPECIFICATION

Type	Mortice lock
Fingerprints	Up to 20
Mechanical keys	2
PIN code	6-12 digits
Finish	Black
Door type	Timber / Aluminium
Door thickness	44-95mm
Backset	60mm
Part number	SYDM4109PLUS

# Electronic Digital Door Lock

The world's favourite lock



## Assure Lock with Bluetooth

## Code Handle



### Features:

- Unlimited number of locks and keys can be managed by the Yale Assure app
- Create up to 12 entry codes for access by keypad
- Ten year warranty for finish and mechanical, one year for electronics
- Certified ANSI/BHMA A156.36, Grade 2
- Key override
- Can be keyed to match other locks for one key solution

### Features:

- Lever handle with integrated code lock
- Program up to 9 User codes, 4-6 digits in length
- Keypad access control lever
- Supplied with Yale 60mm latch
- Easy to install
- Ideal for retrofit installations
- Programmable administration code for setting lock operation and user programming
- Manual or automatic locking
- Passage mode
- Code lockout after 5 incorrect attempts
- Durable stainless steel handles
- Right and left handed versions

### PRODUCT SPECIFICATION

<b>Type</b>	Digital deadbolt
<b>Mechanical keys</b>	Depends on model selected
<b>PIN code</b>	4-8 digits
<b>Finish*</b>	Satin Nickel / Satin Chrome
<b>Digital keys</b>	5
<b>Door type</b>	Timber / Aluminium
<b>Door thickness</b>	35-56mm
<b>User codes</b>	12
<b>Part number</b>	Keyless YRD446NRSN Keyed YRD426NRSN (Satin Nickel) Keyless YRD446NRSC Keyed YRD426NRSC (Satin Chrome)

### PRODUCT SPECIFICATION

<b>Type</b>	Digital Deadlatch
<b>PIN code</b>	4-6 digits
<b>Finish</b>	Stainless Steel / Satin Pearl
<b>Door type</b>	Timber / Aluminium
<b>Rose</b>	70mm
<b>Door thickness</b>	32-55mm
<b>Backset</b>	60mm
<b>User codes</b>	9
<b>Part number</b>	SY8816RSS SY8816LSS

# Electronic Digital Door Lock



## SMARTair™



### What is SMARTair™?

SMARTair™ is a cable free access control system that is simple to install, configure, administer and maintain, offering an intelligent yet simple step up from keys. It's a cost effective alternative to traditional access control. No bells, whistles, or wires, just sleek, reliable security.

SMARTair™ gives you the security of knowing that lost credentials can quickly be prevented from gaining access, the flexibility to restrict user movements across your school, as well as the ability to show historical movement through audit trails.

No cables means no installation hassles, and a reduced cost.



### Update on Card

- System operators use software to apply permissions to the users
- Cards carry their own data to the doors – no need for cabling infrastructure
- Perfect for difficult or impossible to wire sites
- Automatic revalidation of cards means no more lost card issues

### Wireless Online

- System operators use software to apply permissions to the users
- Wireless hubs carry the data to the doors in real time
- Perfect for difficult, or impossible to wire sites
- Lockdown all the doors in the building with a single click

### Stand-Alone

- No software requirement makes this the simplest access control system
- All programming is done at the door unit with a single programming card
- Perfect for smaller sites or where cost is a consideration
- Once installed, the system can be up and running in seconds



# Mechanical Digital Door Lock

## 3772 DX Digital Lock



### Features:

- Suits door thickness of 35 to 50mm
- Utilises Lockwood Selector 3772 Series Cylinder Mortice Deadlatch
- 60mm standard backset
- Pin tumbler mechanism with round brass cylinder
- Operated by keypad outside
- Operated by lever inside

## 3782 DX Digital Lock



### Features:

- 30mm standard backset
- Suits open-out type door
- Timber door thickness 32 to 50mm
- Metal door thickness 35 to 50mm
- Operated by keypad outside
- Operated by lever inside (sold separately)
- Short face aluminium strike plate included

## 530 DX Digital Lock



### Features:

- Suits door thickness of 35 to 45mm
- 60mm standard backset tubular latch
- 70 and 127mm latches available separately on application
- Operated by keypad outside
- Operated by knob inside

### PRODUCT SPECIFICATION

	<b>3772</b>	<b>3782</b>	<b>530</b>
<b>Backset</b>	60mm		127mm
<b>Bolt / Latch Projection</b>	19.5mm	18mm	15mm
<b>Bolt Material</b>	Stainless Steel	Stainless Steel	Stainless Steel
<b>Door Thickness Range</b>	32-50mm	32 to 50mm for timber doors 35 to 50mm for metal doors	35-50mm
<b>Part number</b>	L3772DXKOLSC L3772DXKORSC L3772DXLSC L3772DXRSC	L3782DXLSC, L5782DXLSC, L5782DXRSC, L5792DXRSC, L6782DXRSC, L6792DXRSC	L530DXSC

# Brass Levers and Knobs



ASSA ABLOY

Finger clearance is defined as the clearance between the lever and the base of the rose or plate at the centre of the lever. The tables below are calculated using an assembled plate/rose thickness of 12.5mm. Due to a different bearing bush, the projection and finger clearance of levers in the 4800/5800 Series is 2.5mm larger than the value shown (except Lever 90).



**KNOB 20**

<b>Diameter</b>	50mm
<b>Projection</b>	73mm

*Not compatible with 1220 Symphony internal rose.*



**LEVER 32**

<b>Length</b>	107.5mm
<b>Projection</b>	53mm
<b>Finger clearance</b>	35.5mm



**INTERMEZZO 41**

<b>Length</b>	130mm
<b>Projection</b>	61.5mm
<b>Finger clearance</b>	40.5mm

*\* Lever is an asymmetrical design and therefore must be handed.*



**ARPEGGIO 44**

<b>Length</b>	125mm
<b>Projection</b>	59.5mm
<b>Finger clearance</b>	42mm



**SONATA 45**

<b>Length</b>	117.5mm
<b>Projection</b>	57mm
<b>Finger clearance</b>	40mm



**VELOCE 53**

<b>Length</b>	123mm
<b>Projection</b>	73.5mm
<b>Finger clearance</b>	45mm

*\* Lever is an asymmetrical design and therefore must be handed.*



**LEVER 55**

<b>Length</b>	124mm
<b>Projection</b>	62.5mm
<b>Finger clearance</b>	40.3mm



**LEVER 55A**

<b>Length</b>	115mm
<b>Projection</b>	62.5mm
<b>Finger clearance</b>	40.3mm



**OVERTURE 59**

<b>Length</b>	121mm
<b>Projection</b>	57.5mm
<b>Finger clearance</b>	38mm



**LEVER 60**

<b>Length</b>	121mm
<b>Projection</b>	65mm
<b>Finger clearance</b>	54.2mm



**LEVER 61**

<b>Length</b>	120mm
<b>Projection</b>	52.5mm
<b>Finger clearance</b>	25.5mm

*Lever is an asymmetrical design and therefore must be handed.*



**LEVER 65**

<b>Length</b>	121mm
<b>Projection</b>	51mm
<b>Finger clearance</b>	43.5mm



**LEVER 66**

Length	125mm
Projection	50mm
Finger clearance	42mm



**LEVER 67**

Length	127mm
Projection	48.5mm
Finger clearance	40.5mm



**LEVER 70**

Length	121mm
Projection	53mm
Finger clearance	37mm



**TEMPO 71**

Length	118mm
Projection	62mm
Finger clearance	44.5mm



**VING 74**

Length	120mm
Projection	53mm
Finger clearance	45mm



**LEVER 76**

Length	125mm
Projection	50mm
Finger clearance	42mm



**LEVER 77**

Length	121mm
Projection	51mm
Finger clearance	40.5mm



**CANDENZA 78**

Length	118mm
Projection	52mm
Finger clearance	30mm



**TENOR 79**

Length	124mm
Projection	50.5mm
Finger clearance	40.5mm



**LEVER 79B**

Length	118mm
Projection	50.5mm
Finger clearance	40.5mm



**LEVER 80**

Length	123mm
Projection	49mm
Finger clearance	40mm



**LEVER 83**

Length	112mm
Projection	62mm
Finger clearance	33.5mm



**LEVER 85**

Length	125.5mm
Projection	51mm
Finger clearance	43.5mm



**LEVER 90**

Length	118.5mm
Projection	52mm
Finger clearance	45mm



**LEVER 92**

Length	118.5mm
Projection	52mm
Finger clearance	45mm



**CHORUS LINE 97**

Length	120mm
Projection	50.5mm
Finger clearance	34.6mm

Lockwood Symphony Series door furniture is manufactured from high quality solid brass material. The comprehensive lever range matched with concealed screw fixings by way of threaded rose trims, provides a stylish look for the most elegant interiors.

The accessory range includes cylinder escutcheons, emergency turns and disabled accessible turns. For installers, the unique turn mechanism adjusts to suit the thickness of the door and removes the need to cut tail bars to length.

## 1220 Symphony Series Brass Door Handles



WITH OVERTURE 59



WITH LEVER 70



WITH VING 74

## 1420 Symphony Series Square Rose Door Handles



WITH LEVER 76



WITH LEVER 80



WITH LEVER 32

### PRODUCT SPECIFICATION

<b>Handing</b>	A removable stop screw allows all symmetrically designed levers (e.g. Cadenza) to be handed on site. Levers of asymmetrical design (e.g. Veloce) cannot be reversed. Specify left or right handed when ordering
<b>Materials</b>	All Lockwood roses and levers contained in the 1220 and 1420 series are of solid brass construction
<b>Fixing</b>	Fully concealed on both sides
<b>Door Thickness</b>	Synergy 3570 Series: 32mm to 50mm Lockwood 5260 Latches: 33mm to 50mm
<b>Standard Finishes</b>	Satin Chrome Brushed (SC)
<b>Non-Standard Finishes</b>	Chrome Plate (CP) Polished Brass (PB) Polyester Powdercoat (PC)
<b>Special Finishes</b>	Architectural Bronze (AZ) Architectural Bronze Unlacquered (AU) Antique Copper (AC) Polished Brass Unlacquered (BU) Satin Brass (SB) Oil Rubbed Bronze (ORB)

# 1360 and 1370 Series

Lockwood 1360 and 1370 Series door furniture is manufactured from high quality solid brass material. The comprehensive lever range matched with ease of installation and compatibility with a wide range of mortice locks defines simple and reliable.

The accessory range includes cylinder escutcheons, emergency turns and disabled accessible turns. For installers, the unique turn mechanism adjusts to suit the thickness of the door and removes the need to cut tail bars to length.

## 1360 Series Brass Door Handles



WITH INTERMEZZO 41



WITH ARPEGGIO 44



WITH SONATA 45

## 1370 Series Brass Door Handles



WITH CANDENZA 78



WITH TENOR 79



WITH CHORUS LINE 97

PRODUCT SPECIFICATION	
<b>Materials</b>	All Lockwood roses and levers contained in the 1360 and 1370 series are of solid brass construction
<b>Fixing</b>	Roses are designed to fit back to back. If outside rose is specified with concealed fixing, then the inside rose must be visible fixed. Roses numbered 1360, 1362, 1364, 1370, 1372 and 1374 are concealed fixed, roses numbered 1361, 1363, 1365, 1371, 1373 and 1375 are visible fixed
<b>Door Thickness</b>	Synergy 3570 Series: 32mm to 50mm Lockwood 5260 Latches: 33mm to 50mm
<b>Standard Finishes</b>	Satin Chrome Brushed (SC)
<b>Non-Standard Finishes</b>	Chrome Plate (CP) Polished Brass (PB) Polyester Powdercoat (PC)
<b>Special Finishes</b>	Architectural Bronze (AZ) Architectural Bronze Unlacquered (AU) Antique Copper (AC) Polished Brass Unlacquered (BU) Satin Brass (SB) Oil Rubbed Bronze (ORB)



# 1800 and 2800 Series

For a smart look choose this rectangular plate with bevelled edges and corners. It features concealed fixing on the outside plate.

## Application

Designed for use with Lockwood Selector and Synergy Mortice Locks and Latches.

## 1800 Series Square Brass Plate Furniture



## 2800 Series Round Brass Plate Furniture



PRODUCT SPECIFICATION	
<b>Door Thickness</b>	External plates are supplied with fixing screws to suit door thickness between 32 and 45mm
<b>Dimensions</b>	166 x 48 x 12mm
<b>Fixing</b>	Plates are designed to fit back to back. If outside plate is specified with concealed fixing, then the inside plate must be visible fixed
<b>Handing</b>	Plates are not handed; levers may be reversed by removing the stop screw, except for handed levers and functions as shown in the ordering procedure
<b>Standard Finishes</b>	Satin Chrome Brushed ( <b>SC</b> )
<b>Non Standard Finishes</b>	Chrome Plate ( <b>CP</b> ) Polished Brass ( <b>PB</b> ) Polyester Powdercoat ( <b>PC</b> )*
<b>Special Finishes</b>	Architectural Bronze ( <b>AZ</b> ) Architectural Bronze Unlaqured ( <b>AU</b> ) Antique Copper ( <b>AC</b> ) Oil Rubbed Bronze ( <b>ORB</b> ) Polished Brass Unlaqured ( <b>BU</b> ) Satin Brass ( <b>SB</b> )
<b>Turn Functions</b>	Turn functions feature a unique mechanism that automatically adjusts the length of the tail bar to suit a particular door thickness

# 4800 and 5800 Series

Functional, yet elegant, these rectangular or round ended brass plates complement a wide range of levers.

## Application

Designed for use with Lockwood Selector and Synergy Series short and standard backset mortice locks.

Additionally there are functions that are designed to work with Lockwood 3580/3780 Series short backset mortice deadbolts.

*Note: Certain lever designs are not compatible on short backset assemblies due to interference with the door stop.*

## 4800 Series Square Brass Plate Furniture



## 5800 Series Round Brass Plate Furniture



PRODUCT SPECIFICATION	
<b>Door Thickness</b>	External plates are supplied with fixing screws to suit door thickness between 32 and 50mm. Extension kits are available for wider doors
<b>Dimensions</b>	185 x 26 x 11.5mm
<b>Fixing</b>	Plates are designed to fit back to back. If outside plate is specified with concealed fixing, then the inside plate must be visible fixed
<b>Handing</b>	Plates are not handed; levers may be reversed by removing the stop screw, except for handed levers and functions as shown in the ordering procedure
<b>Standard Finishes</b>	Satin Chrome Brushed (SC)
<b>Non Standard Finishes</b>	Chrome Plate (CP) Polished Brass (PB) Polyester Powdercoat (PC)*
<b>Special Finishes</b>	Aged Brass (AG) Architectural Bronze (AZ) Architectural Bronze Unlaqured (AU) Antique Copper (AC) Oil Rubbed Bronze (ORB) Polished Brass Unlaqured (BU) Satin Brass (SB) Satin Brass Unlaqured (SBU)
<b>Turn Functions</b>	Turn functions feature a unique mechanism that automatically adjusts the length of the tail bar to suit a particular door thickness

# 260 and 260SQ Series

The 260 Series Door Furniture has a 55mm round rose and the 260SQ Series Door Furniture has a 55mm x 2mm square rose. Concealed fixed plates have studs with internal threads located on the rose, visible roses have corresponding countersunk holes and are fixed back to back through the door.

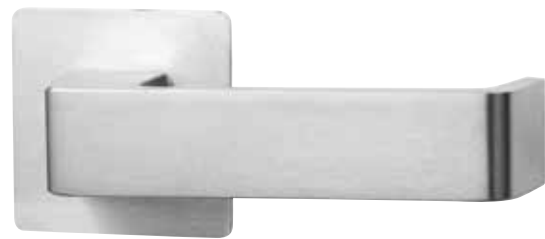
## Application

Designed for use with Lockwood 3570 Series Mortice Latches and with A5250 Tubular Latches.

## 260 Series Door Handle



## 260SQ Series Door Handle



PRODUCT SPECIFICATION		
	260	260SQ
<b>Dimensions</b>	Lever Rose 55 x 3mm - aluminium 55 x 2mm - stainless steel and brass Escutcheon Rose 50 x 3mm - aluminium 50 x 2mm - stainless steel and brass	Lever Rose 55 x 2mm - stainless steel Escutcheon Rose 50 x 2mm - stainless steel
<b>Materials</b>	Aluminium, stainless steel or brass	Stainless steel only
<b>Door Thickness</b>	35 to 45mm standard. For doors 45 to 55mm thick, specify long fixing screws SP2000-208	
<b>Finishes Standard</b>	Natural Anodised Aluminium (NT) Stainless Steel (SS)	Stainless Steel (SS)
<b>Finishes Non Standard</b>	Polished Stainless Steel (PS) Powdercoat (PC) Marine Grade (MG) Polished Brass (PB)	Chrome Plate (CP) Polished Brass (PB) Polyester Powdercoat (PC)

The Velocity® series sets a new benchmark in easy installation and is ideal for both new and retrofit applications. The Velocity® series includes: passage sets for connecting doors, privacy sets for bathroom and toilet doors and dummy half sets for use on cupboard and wardrobe doors where a consistent styling is desired.

## Standard Rose



SUMMIT® - L1



SPIRE® - L2



ELEMENT™ - L3



GLIDE™ - L4



HAKEA - 28



SALTBUSH - 34

## Small Rose



SUMMIT® - L1



SPIRE® - L2



ELEMENT™ - L3



GLIDE™ - L4



HAKEA - 28



ACACIA® - 29A



SALTBUSH - 34



ACCESSION - L5



GIDGEE - 37



Standard Turn Snib - VSR7\*\*



Emergency Indicating Turn - VSR8\*\*



Disabled Accessible Turn Snib - VSR9\*\*



Oval Cylinder Escutcheon - VSR6\*\*



Square Rose Passage Trim - VSS1-TRIM\*\*

The Lockwood Nero® Collection provides a sensuous quality that complements contemporary decor; adding a defining design element to any space.

The collection features a selection of popular Lockwood residential and semi-commercial products in an elegant matt black finish.



**PULL HANDLE**



**VELOCITY® LARGE ROSE**



**VELOCITY® SMALL ROSE**



**CAVITY SLIDING**



**FLUSH PULL**



**724 SERIES DOOR CLOSER**



**NEXION® MECHANICAL**



**PARADIGM® 005**



**OUTLAND SLIDING DOOR TRACK**



The 200 and 202 Artefact Series Door Furniture is 162mm square. Concealed fixed plates have studs with internal threads located in each corner, visible fixed plates have corresponding countersunk holes and are fixed back to back through the door.

#### Application

Designed for use with Lockwood Selector 3770 and Synergy 3570 Series Mortice Locks; latches and push/pull doors.

## 200 Series Square Corner Plate Furniture



## 202 Series Round Corner Plate Furniture



PRODUCT SPECIFICATION	
<b>Dimensions</b>	162 x 162 x 3mm - aluminium 162 x 162 x 2mm - stainless steel and brass
<b>Door Thickness</b>	35 to 45mm standard. For doors 45 to 55mm thick, specify long fixing screws SP2000-208
<b>Finishes Standard</b>	Natural Anodised Aluminium (NT) Satin Stainless Steel (SS)
<b>Fixing</b>	Plates are designed to fit back to back. If outside plate is specified with concealed fixing, then the inside plate must be visible fixed
<b>Finishes Non Standard</b>	316 Marine Grade (MG) Polished Brass (PB) Polished Stainless Steel (PS) Powdercoat (PC)*
<b>Handling</b>	All plates are handed with the exception of plain plates and pull handles
<b>Materials</b>	Aluminium, brass and stainless steel

*Note: When using flush pulls back to back the minimum door thickness is 40mm.*

The 212 and 224 Artefact Series Door Furniture is 162mm long x 50mm. Concealed fixed plates have studs with internal threads located top and bottom, visible fixed plates have corresponding countersunk holes and are fixed back to back through the door.

#### Application

Designed for use with Selector 3770 and Synergy 3570 Series Mortice Locks.

## 212 Series Oval Plate Furniture



## 224 Series Rectangular Plate Furniture



PRODUCT SPECIFICATION		
	212	224
<b>Dimensions</b>	162 x 50 x 3mm - aluminium 162 x 50 x 2mm - stainless steel and brass	162 x 50 x 2mm - stainless steel
<b>Materials</b>	Aluminium, stainless steel or brass	Stainless steel only
<b>Door Thickness</b>	35 to 45mm standard. For doors 45 to 55mm thick, specify long fixing screws SP2000-208.	35mm to 45mm as supplied. Maximum 65mm.
<b>Finishes Standard</b>	Natural Anodised Aluminium (NT) Stainless Steel (SS)	Stainless Steel (SS)
<b>Finishes Non Standard</b>	316 Marine Grade (MG) Polished Brass (PB) Polished Stainless Steel (PS) Powdercoat (PC)	

*Note: When using flush pulls back to back the minimum door thickness is 40mm.*

# Key in Knob and Key in Lever

## 530 Series Key in Knob Locksets

The 530 series is designed as a non-handed, easy-to-install lockset. This high quality range is suitable for residential and semi-commercial applications including office partitioning.



530

## 930 & 950 Series Key in Lever Locksets

The Lockwood Key in Lever Locksets feature a choice of two levers - the 930 series and the 950 series. These locksets are produced from high purity zinc alloy and are available in a comprehensive range of functions.



930



950

PRODUCT SPECIFICATION		
	530	930 & 950
Backset	60mm standard backset. 70mm and 127mm latches available separately	70mm standard backset. 60mm and 127mm latches available separately
Door Thickness	32 to 48mm (all functions except 534 which suits doors 32 to 45mm).	32 to 45mm (all functions except 934 and 954 which suit doors 35 to 41mm).
Finishes	Satin Chrome Brushed (SC)	Satin Chrome Brushed (SC)
Handling	Non-handed lockset	Field adjustable handing
Latch	13mm projection brass bolt	13mm projection
Materials	High purity zinc alloy	High purity zinc alloy. A rose cover is supplied to conceal internal fixing screws

## 001 Double Cylinder Deadlatch

### Features:

- Bolt hold-back function activated by external key or internal knob
- Can be key locked in hold-back position by key from inside
- Can be keyed alike to other Lockwood door locks
- Available in trade and display pack versions



## 002 Single Cylinder Deadlatch

### Features:

- High security with cut resistant stainless steel bolt, 11 concealed anchorage points and door frame strengthener
- Bolt hold-back function activated by external key or internal knob
- Can be keyed alike to other Lockwood door locks



### PRODUCT SPECIFICATION

	001	002
<b>Backset</b>	60mm	60mm
<b>Case</b>	High purity zinc alloy	High purity zinc alloy
<b>Cylinders</b>	Internal and external 5 pin tumbler mechanism. Brass cylinders and brass barrels	External 5 pin tumbler mechanism. Brass cylinder and brass barrel
<b>Door Thickness</b>	30-45mm	30-45mm
<b>Finish</b>	Gold ( <b>GLD</b> ) Satin Chrome Pearl ( <b>SP</b> ) Chrome Plate ( <b>CP</b> ) Brown ( <b>BRN</b> ) Everbrass ( <b>EVB</b> )	Gold ( <b>GLD</b> ) Satin Chrome Pearl ( <b>SP</b> ) Chrome Plate ( <b>CP</b> ) Brown ( <b>BRN</b> )
<b>Latch</b>	Stainless steel 18mm projection	Stainless steel 18mm projection
<b>Packers</b>	3mm thick packer plates are available, these packers are installed under lock body to align lock body with face of jamb	3mm thick packer plates are available, these packers are installed under lock body to align lock body with face of jamb
<b>Part number</b>	L001-1K1, L001-1L1, L001-3K1, L001-3L1, L001-4K1, L001-4L1	L002-1K1, L002-1L1, L002-3K1, L002-3L1, L002-4K1, L002-4L1

# Detention Series

A heavy duty plate designed for use in hospitals and detention facilities. Styled for institutional use, this plate has six fixing points to ensure that it is well secured to the door. Plates are designed to be free of ligature points.

#### Application

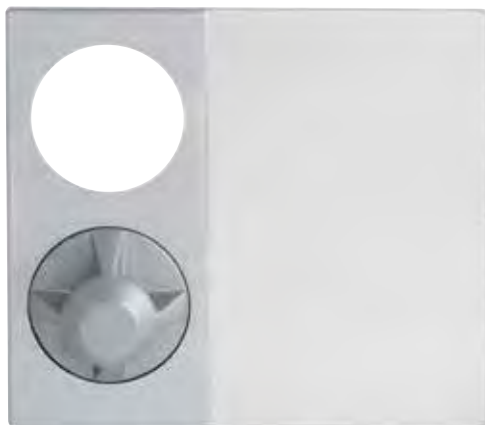
Designed for use with Lockwood Selector 3770 and Synergy 3570 Series Mortice Locks as well as Lockwood 3579 Secure Area Rated Locks.

This smaller plate range has been designed for use in detention facilities such as hospitals where domestic aesthetics are preferred over institutional type styling. Plates are designed to be free of ligature points.

#### Application

Designed for use with Lockwood Selector 3770 and Synergy 3570 Series Mortice Locks as well as Lockwood 3579 Secure Area Rated Locks.

## Detention Series Square Plate Furniture



## Detention Series Rectangular Plate Furniture



## Lever and Knob Selection



**STANDARD KNOB 21**



**WEBBED KNOB 22**



**LEVER 23**

PRODUCT SPECIFICATION		
	Square	Rectangular
<b>Dimensions</b>	162mm x 180mm x 2mm: base plate 161mm x 75mm x 3mm: bevelled top plate	162mm x 76mm x 2mm: base plate 161mm x 75mm x 3mm: bevelled top plate
<b>Door Thickness*</b>	35mm minimum, 45mm maximum	35mm minimum, 45mm maximum
<b>Finishes</b>	Satin Stainless Steel ( <b>SS</b> )	Satin Stainless Steel ( <b>SS</b> )
<b>Fixing</b>	Six fixing points 220D series plates have concealed fixings 221D series plates have visible fixings	Four fixing points 222D series plates have concealed fixings 223D series plates have visible fixings
<b>Handling</b>	All plates are handed except 220D07, 220D24 and 220D31, which are non-handed when ordered without engraving	Only plates with 23 Lever and / or turnknobs are handed
<b>Materials</b>	Stainless steel	Stainless steel

\*Note: A minimum door thickness of 50mm is required to fit flush pulls back to back.



Lockwood Entrance Handles are constructed using the finest materials to incorporate the maximum standards in style, durability, finish and design.

Combining fit for purpose with the epitome of style, the Lockwood Entrance Handles range represents a comprehensive collection of high quality back to back handles.

Nine designs, ranging from classic to contemporary, have been selected to complement the evolving style requirements of both residential and commercial markets.

**Application**

Lockwood Entrance Handles are suitable for use on timber or aluminium frame as well as glass doors; making them the ideal choice for commercial, industrial and residential applications.



141



142



143



145



146



147



151



192



231

PRODUCT SPECIFICATION	
Materials	Stainless Steel Construction: Constructed of 304 grade stainless steel, Lockwood Entrance Handles are suitable for use in external environments
Finishes	Satin Stainless Steel (SSS)

## Application

Concealed fixed plates have studs with internal threads located in each corner, visible plates have corresponding countersunk holes and are fixed back to back through the door.

Designed for use with Lockwood 3570 Synergy Series and 3770 Selector Series Mortice Locks.

## 214/215 Series



## 216/217 Series



## 218/219 Series



## PRODUCT SPECIFICATION

	214/215	216/217	218/219
<b>Dimensions</b>	Length: 300mm Width: 100mm Thickness: 2mm Handle Diameter: 17.5mm Finger Clearance: 40mm	Length: 300mm Width: 65mm Thickness: 2mm Handle Diameter: 17.5mm Finger Clearance: 40mm	Length: 250mm Width: 50mm Thickness: 2mm Handle Diameter: 17.5mm Finger Clearance: 40mm
<b>Materials</b>	Stainless steel or brass	Stainless steel or brass	Stainless steel or brass
<b>Door Thickness</b>	35 to 45mm standard. For doors 45 to 55mm thick, specify long fixing screws SP2000-208		
<b>Finishes</b>	Satin Stainless Steel (SS) Polished Stainless Steel (PS) Powdercoat (PC) Polished Brass (PB)	Satin Stainless Steel (SS) Polished Stainless Steel (PS) Powdercoat (PC) Polished Brass (PB)	Satin Stainless Steel (SS) Polished Stainless Steel (PS) Powdercoat (PC) Polished Brass (PB)

Selector® 3772 Escape Locks

These locks have various latching functions which can be operated by key or handle outside and by turnknob, key or handle inside.



Selector® 3782 Short Backset Escape Locks

These locks have various latching functions operated generally by key or handle outside and by turnknob, key or handle inside. These locks comply with building regulations for single-action escape doors.



PRODUCT SPECIFICATION		
	3772	3782
Backset	Available in 60, 89 and 127mm backsets	Available in 25.4, 30 and 38mm backsets
Furniture	Compatible with most Lockwood rose and plate furniture including Brass Door Furniture, Robert Watson Series, Artefact Series II, Ovation Series and VSR Series	Compatible with Lockwood 4800 and 5800 Series Furniture
Latch	Deadlatch only	Deadlatch only
Standard Finishes	Stainless Steel (SS) - Other finishes available via finish kit conversions	Stainless Steel (SS) - Other finishes available via finish kit conversions

## 3540 Short Backset Mortice Deadlock

Short backset, swing bolt deadlocks suitable for narrow stile hinged doors. Positive action deadbolt locked or unlocked by either key, turnknob, escape turn or lever handle. Suitable for sliding doors where lock can be mounted to door jamb and deadbolt engages strike mounted to face of door.



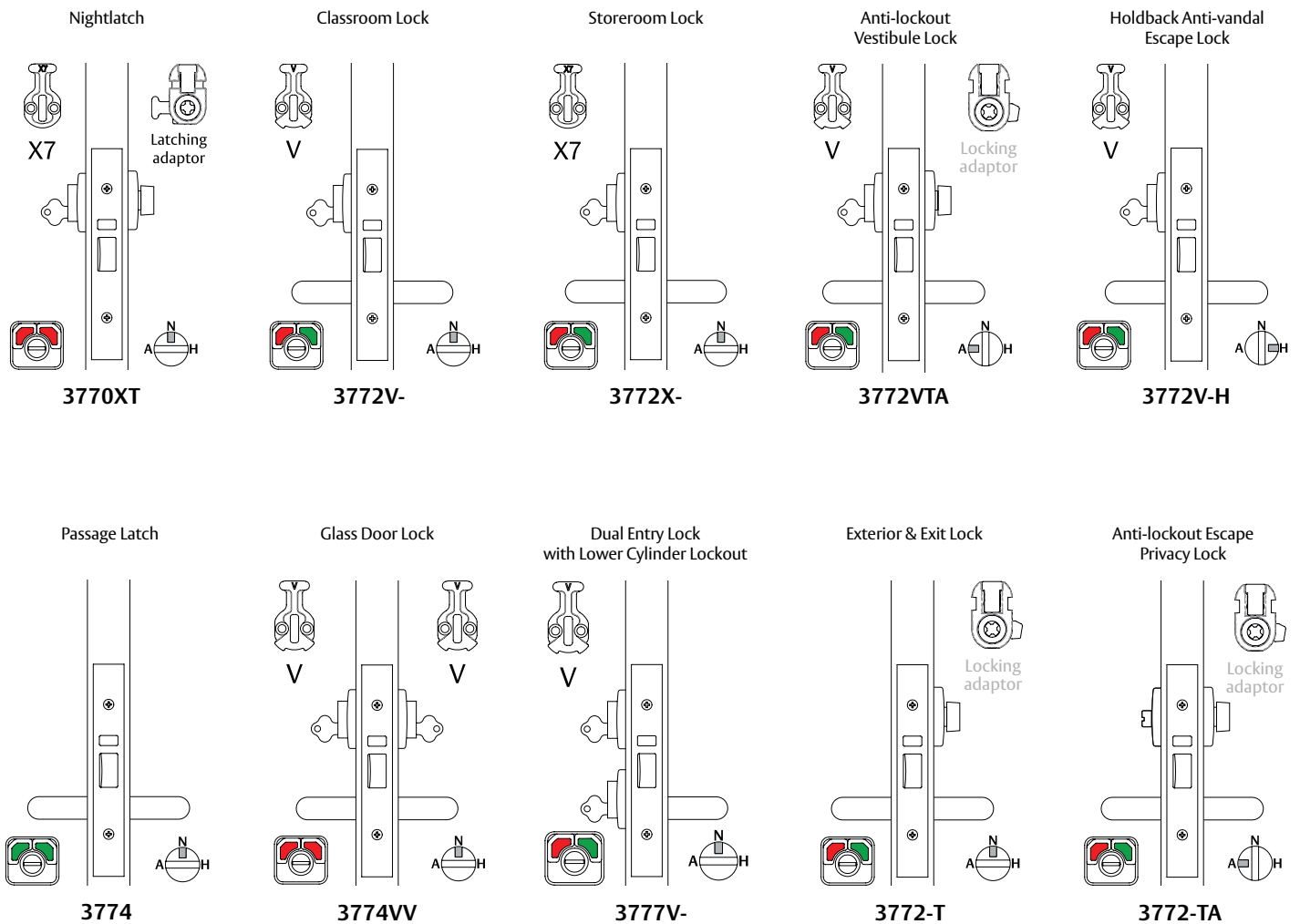
## 3541 Short Backset Mortice Hook Bolt

Short backset, swing-bolt deadlocks suitable for narrow stile sliding and swing doors. Positive action deadbolt is hooked to engage and lock into a latching or security strike when the bolt is in the thrown position. Deadbolt is locked or unlocked by either key, turnknob, escape turn or lever handle.



PRODUCT SPECIFICATION		
	<b>3540</b>	<b>3541</b>
<b>Backset</b>	23mm and 30mm	23mm and 30mm
<b>Bolt</b>	22mm projection sintered stainless steel	28mm projection sintered stainless steel. The bolt is hooked to suit sliding and swing applications and is chamfered for self latching
<b>Door Thickness</b>	Suits hollow stile door sections with 28mm internal thickness and 50mm maximum external thickness Timber Doors: 32 to 50mm	
<b>Materials</b>	High quality zinc alloy case	
<b>Strikes</b>		Latching strike for sliding doors and non latching security strike for swing doors to protect against jemmying

# Specification Guide



## Vestibule Door Lock:

Lockwood 3772-XT Vestibule lock  
 Lockwood 1801/70SC  
 Lockwood 1904/70SC  
 DC7726DASIL Door Closer (Optional)

## Privacy Lock:

Lockwood 3772-T Privacy Lock  
 Lockwood 1814/70SC  
 Lockwood 1939/70SC (L or R)  
 DC7726DASIL Door Closer (Optional)

## Passage Lock:

Lockwood 3774 Passage Lock  
 Lockwood 1805/70SC  
 Lockwood 1905/70SC  
 DC7726DASIL Door Closer (optional)

## Storeroom Lock:

Lockwood 3772X Storeroom Lock  
 Lockwood 1801/70SC  
 Lockwood 1905/70SC  
 DC7726DASIL Door Closer (Optional)

(ALL FIRE RATED DOORS TO HAVE A DOOR CLOSER)



## 3570 Series Electric Mortice Lock

The lock can be operated by push buttons, intercom systems and key switches or integrated with electronic access control systems for use with higher security devices such as keypads or card readers.



## 3580 Series Electric Mortice Lock

The lock can be operated by push buttons, intercom systems and key switches or integrated with electronic access control systems for use with higher security devices such as keypads or card readers.

The 3580 Series is available in a wide variety of configurations to suit varying requirements and is especially suited to narrow style or short backset applications.

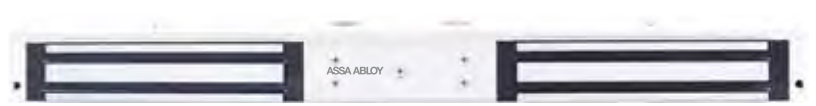


PRODUCT SPECIFICATION		
	3570	3580
<b>Voltage</b>	12Vdc - 24Vdc operating voltage	Available in 12Vdc - 24Vdc
<b>Current</b>	500mA (max) 80mA holding @ 12Vdc 275mA (max) 50mA holding @ 24Vdc	12Vdc $\pm$ 5% 250mA (max) 24Vdc $\pm$ 5% 125mA (max)
<b>LED Current</b>	When LEDs are fitted, add 15mA (max) to total current draw	When LEDs are fitted, add 15mA (max) to total current draw
<b>Monitoring</b>	Dual key override Deadlatched and door closed Request to exit Locked Microswitches: 500mA (max) @ 30Vdc each circuit Reedswitch: 100mA (max) @ 30Vdc	Key override Deadlatched and door closed Request to exit Hub/deadlatch/key override monitor: max ratings 500mA @ 30Vdc Door status monitor: max ratings 3W, 250mA (max) @ 12Vdc, 125mA (max) @ 24Vdc
<b>Environment</b>	Operational temperature range -20°C to +60°C	Operational temperature range -20°C to +60°C
<b>Case/Cover</b>	High purity zinc alloy construction	High purity zinc alloy construction
<b>Backset</b>	60mm standard, 89 and 127 mm available	23mm standard, 25.4, 30 and 38 mm extended available
<b>Latch Bolts</b>	Reversible with stainless steel construction	15mm stainless steel construction
<b>Door Clearance</b>	3 - 6.5 mm	3 - 6.5 mm
<b>Door Thickness</b>	Standard applications 32 to 50mm	Standard applications 32 to 50mm - Extension kits available
<b>Cylinder</b>	Standard Lockwood oval shaped cylinders	Standard Lockwood oval shaped cylinders
<b>Cabling</b>	1.6 metre length of cable with 12 pin socket supplied with each lock. Recommended cable: 18AWG (0.82mm <sup>2</sup> ) cable runs up to 30m	3.6 metre length of cable with 9 pin socket supplied with each lock. Recommended cabling: 18AWG (0.82mm <sup>2</sup> ) cable runs up to 30m
<b>Furniture</b>	Compatible with Lockwood series door furniture	Compatible with Lockwood series door furniture
<b>Standard Finishes</b>	Satin Chrome (SC) standard Bright Chrome (CP) Polished Brass (PB)	Satin Chrome (SC) standard Bright Chrome (CP) Polished Brass (PB)

A door can be kept closed using the holding force of a low-voltage magnet. ASSA ABLOY's line of electro magnets is suitable for high-traffic applications as well as for easy installation on glass doors.



**A4 ELECTROMAGNETIC LOCK**



**A4 DOUBLE ELECTROMAGNETIC LOCK**



**A8 ELECTROMAGNETIC LOCK**



**A8 DOUBLE ELECTROMAGNETIC LOCK**



**A4 RECESSED ELECTROMAGNETIC LOCK**



**A8 RECESSED ELECTROMAGNETIC LOCK**

## PRODUCT SPECIFICATION

	Singles Series		Double Series		Recessed	
	A4 Magnet	A8 Magnet	A4 Magnet	A8 Magnet	A4 Magnet	A8 Magnet
<b>Holding Force</b>	250-280 Kg	550kg-580kg	500-560 Kg	1100kg-1160kg	500-560 Kg	1100kg-1160kg
<b>Dimensions</b>	(L)250 x (H)51.8 x (D)27.9mm	(L)265 x (H)71.8 x (D) 39 mm	(L)500 x (H)48.8 x (D)27.9mm	(L)530 x (H)71.8 x (D) 39 mm	(L)500 x (H)48.8 x (D)27.9mm	(L)530 x (H)71.8 x (D) 39 mm
<b>Voltage</b>	12Vdc/24Vdc +/- 10%	12Vdc/24Vdc +/- 10%	12Vdc/24Vdc +/- 10%	12Vdc/24Vdc +/- 10%	12Vdc/24Vdc +/- 10%	12Vdc/24Vdc +/- 10%
<b>Current</b>	520mA @ (12Vdc) 260mA @ (24Vdc)	420mA @ (12Vdc) 210mA @ (24Vdc)	520mA @ (12Vdc) 260mA @ (24Vdc)	840mA @ (12Vdc) 420mA @ (24Vdc)	520mA @ (12Vdc) 260mA @ (24Vdc)	840mA @ (12Vdc) 420mA @ (24Vdc)
<b>Monitoring</b>	Hall-Effect & Reed Switch		Hall-Effect (Optional)		Hall-Effect & Reed Switch	
<b>Operating Temperature</b>	-10 to 55 Degrees	-10 to 55 Degrees	-10 to 55 Degrees	-10 to 55 Degrees	-10 to 55 Degrees	-10 to 55 Degrees
<b>Operating Humidity</b>	0-90%	0-90%	0-90%	0-90%	0-90%	0-90%
<b>Part Number</b>	AAEMAGA4SSHSAL (Non Monitored) AAEMAGA4SSHRAL (Monitored)	AAEMAGA8SSHSAL (Non Monitored) AAEMAGA8SSHRAL (Monitored)	AAEMAGA4DSHSAL (Non Monitored) AAEMAGA4DSHRAL (Monitored)	AAEMAGA8DSHSAL (Non Monitored) AAEMAGA8DSHRAL (Monitored)	AAEMAGA4SRHSAL	AAEMAGA8SRHSAL

The product is equipped with an electric motor and opens single action doors and swing doors. It is suitable for horizontal or vertical installation in the door frame or door leaf.

The door contact and the armature contact are designed as free switching contacts. The door contact is activated magnetically when the door is closed. The armature contact can be used to monitor the lock status.

The product is fail-safe and is suitable for escape doors. In the event of power loss or if the power fails, the bolt can be pushed back.

## PRODUCT SPECIFICATION

<b>Input Operating Voltage</b>	12VDC $\pm$ 10%; 24VDC $\pm$ 10%
<b>Operating Current</b>	880mA @ 12VDC; 520mA @ 24VDC
<b>Holding Current</b>	480mA @ 12VDC; 270mA @ 24VDC
<b>Pre-Load</b>	510kg
<b>Holding Force</b>	510kg
<b>Handing</b>	Universal
<b>Installation</b>	Vertical or Horizontal
<b>Monitoring Contact</b>	Yes
<b>Fail Safe (Power-To-Lock)</b>	Yes
<b>Finish</b>	Stainless Steel
<b>Bolt Material</b>	Steel
<b>Bolt Length</b>	10mm
<b>Operating Temperature Range</b>	-15 °C to +50 °C
<b>Length</b>	200mm
<b>Width</b>	25mm
<b>Depth</b>	42mm
<b>Rebate Gap</b>	3mm



Electric strikes are a common component within electromechanical door systems. They are characterised by speed, durability and longevity. ASSA ABLOY's line of electric strikes is suitable for a variety of applications.



**ES100 SERIES**



**ES200 SERIES**



**ES300 SERIES**



**ES2000 SERIES**



**ES2600 SERIES**



**ES9000 SERIES**

## PRODUCT SPECIFICATION

	<b>ES100</b>	<b>ES200</b>	<b>ES300</b>	<b>ES2000</b>	<b>ES2600</b>	<b>ES9000</b>
<b>Voltage</b>	12Vdc and 24Vdc	12 or 24Vdc	12 or 24Vdc	12Vdc	12 or 24Vdc	10 – 30Vdc
<b>Current</b>	250 mA @ 12Vdc - 125mA @ 24Vdc	175 mA @ 12Vdc - 88 mA @ 24Vdc	175mA @ 12Vdc – 88mA @ 24Vdc	175 mA @ 12Vdc	175mA @ 12Vdc – 88mA @ 24Vdc	250mA @12Vdc – 130mA @24Vdc
<b>Solenoid</b>	Solenoids are rated for continuous use					
<b>Monitoring</b>	None			Solenoid Monitor - 1 amp NO/NC microswitch Door/Latch Monitor - 1 amp NO/NC microswitch		
<b>Holding Force</b>	680 kg Static Strength Rating	850kg Static Strength Rating	850kg Static Strength Rating	850kg Static Strength Rating	650kg Static Strength Rating	1300kg static strength rating
<b>Latching</b>		Suitable for 15mm latch bolt with 3mm door gap	Suit 18mm latch bolt with 3 mm door gap	Suitable for 15mm latch bolt with 3 mm door gap		Suitable for 15mm latch with 3mm door gap
<b>Endurance</b>	Cycle tested to 1,000,000 operations	Cycle tested to 1,000,000 operations	Cycle tested to 1,000,000 operations	Cycle tested to 1,000,000 operations	Cycle tested to 1,000,000 operations	1,200,000 cycles endurance rating @ 25kg pre-load 2,500,000 cycles general durability without pre-load conditions
<b>Environment</b>	Operational temperature range -20°C to +60°C Weather resistant construction. (IP56)	Operational temperature range -20°C to +60°C	Operational temperature range -20°C to +60°C	Operational temperature range - 20°C to +60°C	Operational temperature range - 20C to +60C	Operational temperature range - 20C to +60C
<b>Body</b>	Cast Aluminium Construction					
<b>Keeper</b>	Stainless Steel					

## 2615 CAM Action Door Closer with Slide Arm

The Lockwood 2615 Series is a non-handed CAM Action Door Closer. Due to the CAM design this premium door closer is light to open but still strong enough to close a door.

The Lockwood 2615 Door Closer can be adjusted to meet the requirements of a light door opening resistance and is ideal for both interior and exterior doors. The Lockwood 2615 is light to open, but its adjustable closing force is high enough for heavy duty applications.

For disabled toilet applications where a breakout feature is required, the double action of the mechanism allows the door to be operated in the opposite direction for easy access into the room.

One model (2615) covers right hand and left hand applications, pull side/push side applications and also features an adjustable arm height.



## 2616 CAM Action Door Closer with Slide Arm

The Lockwood 2616 CAM Action Door Closer is a premium, high quality door closing device. When opening a door fitted with a Lockwood 2616 CAM Action Door Closer, the force required is less than that of a rack and pinion type door closer and continues to decrease through the opening arc.

This aesthetically appealing, narrow profile CAM Action Door Closer is suited for public and commercial applications where children, the elderly and the disabled are likely to be using the door.

The Lockwood 2616 is light to open, but its adjustable closing force is high enough for heavy duty applications.

One model (2616) covers right hand and left hand applications, pull side/push side applications and also features an adjustable arm height.



### PRODUCT SPECIFICATION

	<b>2615</b>	<b>2616</b>
<b>Power</b>	EN adjustable 1 to 5	EN adjustable 1 to 6
<b>Back Check (BC)</b>	Adjustable	
<b>Hold Open</b>	Adjustable. Hold-open can be set at any angle up to 120° of opening	
<b>Handling</b>	Non-handed. Suitable for left or right hand doors	
<b>Cover</b>	Formed metal cover	
<b>Materials</b>	Cast aluminium body manufactured from high-performance silicon alloy	
<b>Mechanism</b>	CAM action	
<b>Mounting</b>	Pull side, push side and over-door mounting	
<b>Valves</b>	Two pressure relief valves are a standard feature to protect against abuse	
<b>Delayed Action</b>	Adjustable	
<b>Closing Speed</b>	Adjustable	
<b>Latching Speed</b>	Adjustable	

## 7700 Series Door Closers



**7714SRDA SERIES PREMIUM RANGE**



**7714DA SERIES PREMIUM RANGE**



**7726SRDA SERIES PREMIUM RANGE**



**7726DA SERIES PREMIUM RANGE**

The Slide Arm Series permits smoother opening by way of reducing power as the door opens. Ideally suited for schools, hospitals or doors where children, disabled or the aged may enter.

Rack and pinion adjustable power door closer suitable for architectural and commercial applications.

### PRODUCT SPECIFICATION

	7714SRDA	7726SRDA	7714DA	7726DA
Power	EN adjustable 1 to 3	EN adjustable 1 to 5	EN adjustable 1 to 4	EN adjustable 2 to 6
Back Check (BC)	Adjustable			
Hold Open	Adjustable. Hold-open can be set at any angle up to 130° of opening		Adjustable. Hold-open can be set at any angle up to 150° of opening	
Handling	Non-handed. Suitable for left or right hand doors			
Cover	Fully formed metal			
Materials	Extruded aluminium body manufactured from high-performance silicon alloy			
Mechanism	Rack and pinion design			
Mounting	Regular and over-door mounting			
Valves	Adjustable closing and latching speed valves with overload protection			
Delayed Action	Adjustable			

## 72 Series Door Closers



**726SR SERIES**



**726 SERIES**



**724SR SERIES**



**724 SERIES**

The Lockwood Rack & Pinion Slide Arm Series provides for a cleaner, more aesthetic appearance on the door whilst utilising the same robust features and benefits of Rack and Pinion functionality.

A range of adjustable power door closer units suitable for architectural and commercial applications.

### PRODUCT SPECIFICATION

	726SR	724SR	726	724
Power	EN adjustable 2 to 6	EN adjustable 2 to 4	EN adjustable 2 to 6	EN adjustable 2 to 4
Back Check (BC)	Adjustable			
Hold Open	Adjustable. Hold-open can be set at any angle up to 130° of opening		Adjustable. Hold-open can be set at any angle up to 150° of opening	
Handling	Non-handed. Suitable for left or right hand doors			
Cover	Clip-on			
Materials	Extruded aluminium body manufactured from high-performance silicon alloy			
Mechanism	Rack and pinion design			
Mounting	Regular, parallel and over-door mounting			
Valves	Adjustable closing and latching speed valves with overload protection			



## 9800 Series Concealed Overhead Transom Door Closers

Lockwood 9800 Series Concealed Overhead Transom Door Closers provide a solution for applications where door control must be provided without disturbing the appearance of the door.

The closer fits into the transom above the door, most of the preparatory work is undertaken prior to installation, leaving minimal on site fitting.

Fully concealed door closers are designed to provide positive centring and door control on manually operated single or double action internal and external doors in schools, hospitals, clubs, factories, offices and commercial buildings.



### PRODUCT SPECIFICATION

<b>Back Check (BC)</b>	Built in back check from approximately 80°
<b>Closing Angles</b>	130° to 15°
<b>Dimensions</b>	Compact body size fits into 44.5mm x 100mm header section
<b>Doors</b>	Suitable for fire, metal, timber and glass doors
<b>Door Thickness</b>	Minimum 38mm
<b>Door Weight</b>	Maximum 115kg
<b>Hold-open</b>	Mechanical hold-open at 90° and 105°
<b>Latching Angles</b>	15° to 0°
<b>Materials</b>	Furniture body: high grade cast iron. Internal body: heat treated high alloy steel and ball bearings for optimum efficiency
<b>Opening Angle</b>	Maximum 130°
<b>Pivot Point</b>	70mm
<b>Hydraulics</b>	Stable hydraulic oil for a wide range of climatic conditions enabling constant operation
<b>Valve</b>	Built in pressure release valve protects closer from rough use

## 8800 Series

The Lockwood 8800 Series Floor Closers are designed to provide door control on manually operated double action doors in a wide range of commercial applications. The mounting kit provided with the Lockwood 8800 Series will suit glass, timber and aluminium frame door construction as standard.



### PRODUCT SPECIFICATION

<b>Door Adjustment</b>	The Lockwood 8800 is positionally adjustable for a height of 4mm, a width of 10mm and a length of 9mm
<b>Door Control</b>	Two independent adjustment valves provide full hydraulic control from 130° to 15° of closing and 15° to 0° of latching
<b>Door Frame Type</b>	Timber/aluminium/steel
<b>Door Thickness</b>	Minimum for timber 32 mm
<b>Door Weight</b>	Up to 120kg as standard
<b>Door Width</b>	Up to 1150mm (refer to selection procedure)
<b>Finishes</b>	Stainless Steel ( <b>SSS</b> ) Gold ( <b>GLD</b> ) Polished Stainless Steel ( <b>PSS</b> ) Other finishes on application
<b>Hold-Open</b>	Available in both non hold-open and hold-open versions. Mechanical hold-open 90° and 105° in separate units

## ST8011SSS Floor Closer

The Lockwood ST8011SSS double action Floor Closer has been specifically designed to meet the exacting requirements of double or single action pivoted doors with a door leaf weight up to 300kgs. Innovative design enables onsite flexibility over a wide range of applications.



### PRODUCT SPECIFICATION

<b>Adjustable Closing-Speed</b>	Adjustable Closing Speed: Closing 175deg - 15deg, Latching speed 15deg - 0deg
<b>Back Check (BC)</b>	The integrated mechanical back check function offers optimum protection for doors and walls. With these standard features built into one product this means there is only one model to specify and stock to cover a wide range of applications
<b>Construction</b>	Cast iron body Three thermodynamic valves for consistent performance Built in pressure relief valve Cement box hot zinc plated steel Universal cover plate
<b>Delayed Action</b>	Adjusting this valve controls the closing time of the door between 170deg - 85deg
<b>Door Specifications</b>	Suitable for door weights up to 300kgs Leaf widths from 950mm - 1400mm Max opening angle 175deg
<b>Hold-Open</b>	By setting the HO valve the door can be set to hold open the door at any angle from 85deg to 170deg opening, to release door manually pull door closed
<b>Power Adjustment</b>	Turning the screw valve the power can be adjusted from EN size 3-6; closing force ranges from 24Nm to 60Nm

# Panic Exit Device

## Fluid Series

The next generation in the Lockwood Panic Exit Device range, the FLUID Series provides a fundamental means of escape whilst offering a completely unique locking mechanism and design aesthetic.

With this type of unique innovation, ASSA ABLOY continues to evolve in standardising the market. The Lockwood FLUID Exit Device range combines ergonomics and performance with a completely new type of axis mechanism and high security bolt system.

### Features:

- Brushed Stainless Steel Bolt
- High level of resistance. Up to 500kg to each latching point.
- Tested to 1,000,000 cycles
- Auxiliary bolt activation from 1mm
- Effortless opening < 20N required
- Available in both vertical and horizontal latching positions in 2/3 point configurations
- Bar can be cut down to 350mm
- New fixing bracket and template design reduces installation time by up to 50%

**Protect.** Evacuate people safely

**Secure.** High vandal resistance

**Optimise.** A simple and efficient installation process



**HORIZONTAL LATCHING**



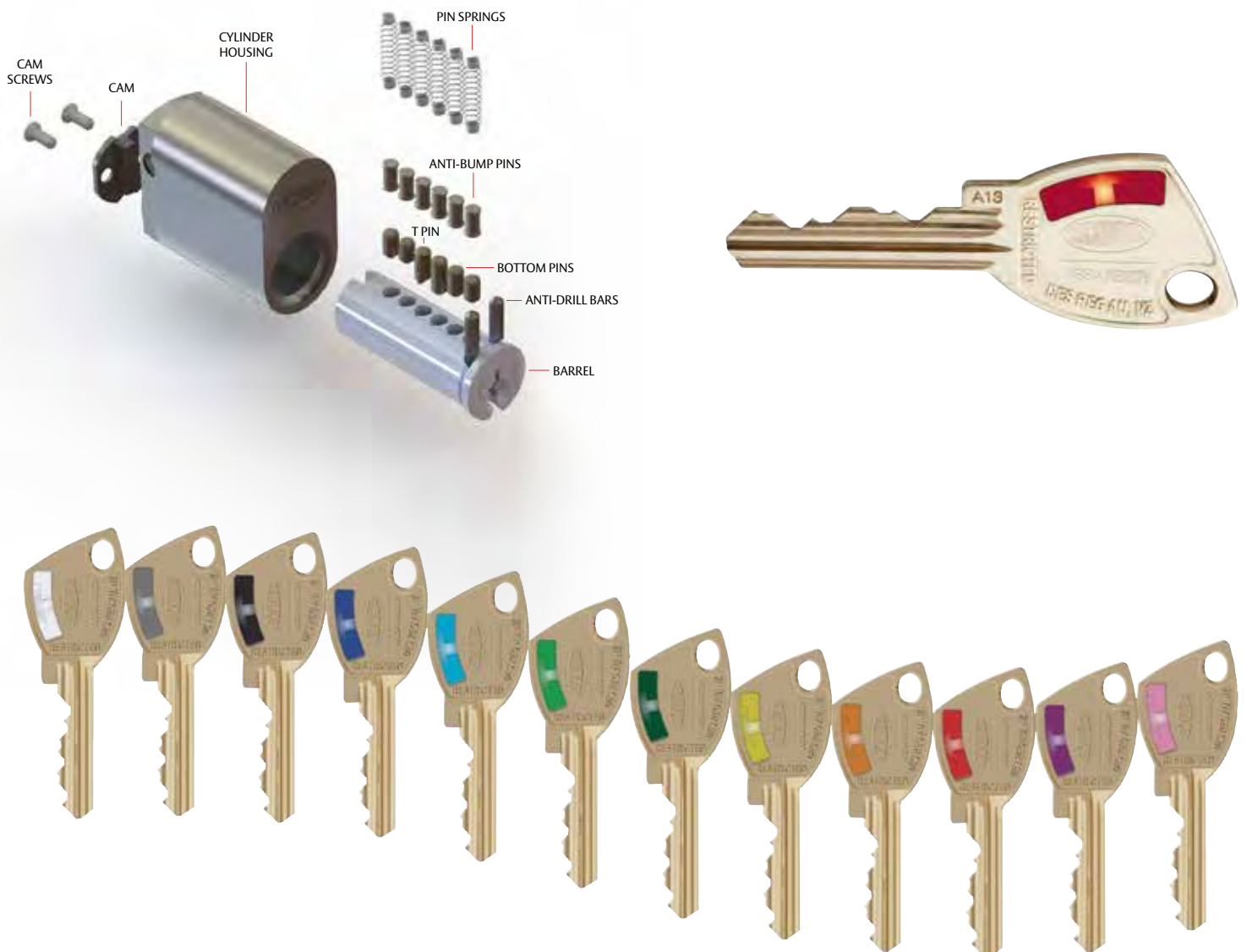
**VERTICAL LATCHING**

## Gen 6T

Legal protection in the form of a patent on the T Pin - valid until 2026, which protects cut keys and cylinders.

Lockwood Gen 6T is suited to a wide range of application such as: office complexes, retail shops, factories, warehousing, motels, hospitality industry, sporting clubs, small businesses, apartment buildings and schools.

- Available in lengths 1-9
- A minimum of one T Pin must be used per cylinder, other chambers can use standard pins.
- New coloured plastic key inserts have been designed incorporating the T
- These distinguish between a GEN6T cut key and Generation Six cut key
- All barrels will come with T Pin slots in the chambers, this is to allow the use of the T Pins. Barrels are backward compatible with Generation Six



All ABLOY® locks are based on the unique operating principle of rotating detainer discs. Inside the ABLOY® cylinder, a series of discs rotate and function like those in a safe. Only the correct key, turned 90 degrees, will rotate the discs aligning the side bar gates. After the discs are aligned to the correct opening combination, the locking bar drops into the aligned slot allowing the lock to open. To withdraw the key it must be turned in the reverse direction until it stops. This will mechanically scramble the discs.

## Abloy Protec2 Cliq

ABLOY® PROTEC2 CLIQ is a true one key solution where CLIQ keys are able to operate both the electromechanical and mechanical cylinders.

ABLOY® PROTEC2 CLIQ is a very cost effective solution. CLIQ cylinders are installed in areas which require electronic features such as audit trails, time limited access and easy blocking of lost keys. Those areas could for instance be the perimeters, storerooms or server rooms. Mechanical ABLOY® PROTEC2 cylinders are then installed in the other areas.



## Abloy Protec2

ABLOY PROTEC2 is the latest milestone in the development of the unique ABLOY rotating disc cylinder keying systems.

In an ABLOY PROTEC2 locking system, different products can be keyed into the same master key system and thus all products can be operated with just a single key. This simplifies your locking system and key management. The range is wide, there are 197 billion different key combinations providing the possibility to create extensive master key systems that fulfil your exact specifications.



## Abloy Novel

The unique ABLOY cylinder mechanism, based on the use of rotating discs instead of the traditional springs and pins, is known widely by security professionals all over the world.

In the ABLOY NOVEL locking system different products can be keyed into one master key system and thus all products can be operated with just a single key whether the application is a door, gate, drawer or cabinet.

The range is wide providing the possibility to create extensive master key systems that fulfil your exact specifications. ABLOY NOVEL is an excellent solution for new builds as well as when upgrading existing locking systems. With the ABLOY product range the core always remains the same.



## Window Fasteners

Designed specifically in line with leading architectural innovations. The simple styling and unobtrusive lines of the range make both a competitive and attractive fastener option.

## Nexus

A highly innovative range of high capacity aluminium stays, the Nexus stay range is designed to replace existing A stay ranges in the New Zealand market. The Nexus stay range can support window weights of up to 60kg and 2m in height, while still maintaining endurance performance and handle forces, making it the highest capacity aluminium residential window stay on the market.

## Optimum Mortice Locks

The Optimum Mortice Lock is easy to install and has field selectable handing. There are different models available for sliding and hinged applications. The Optimum range of mortice locks is compatible with a range of levers on long plate furniture including Palladium and Palladium Xtra.

## Endeavour

Combining the very popular Albany furniture styling with a concealed mortice style lockset, the Albany Endeavour Mortice lock offers the ultimate in residential sliding door hardware. The Albany Endeavour mortice range is simple to operate, requires a single action to lock or unlock, and can be supplied in a wide range of finishes and keying options. Suitable for use with aluminium, timber or uPVC horizontal sliding doors and windows.



WINDOW FASTENERS



NEXUS



OPTIMUM MORTICE LOCKS



ENDEAVOUR



## Lockwood Flush Bolt (FB100, FB150, FB200)

The Lockwood range of flush bolts are manufactured from premium brass material and are designed for use in timber door applications to secure the inactive leaf of a set of double doors. Recessed into the edge of the door and completely concealed when the door is in the closed position. The flush bolt range is available in a variety of lengths to suit most applications.

## Yale Flush Bolt (P3513, P3512)

The Yale flush bolt range is used for safe bolting of aluminium doors and windows. The 7mm diameter plated steel rod provides high security and is activated by a strongly constructed die-cast zinc body and operating lever with comfortable finger grip.

## Flush Pulls (FP1-120, FP1-150, FP2-120, FP2-150)

Lockwood Stainless Steel Flush Pulls can be used on any door where a 'flush with the door face' pull is desired including sliding or cavity doors. The internal edges of the flush pull handles are finished for comfort of use and to soften aesthetics.

## Toilet Indicator (L550, L811, L801)

Easy to install, surface mounted toilet bolts with an indicator to denote whether a room is occupied or vacant.

## Hinges (LLW10075)

The 100 Series Architectural Hinges are designed to provide an effective solution to hanging doors where there is a need for high grade architectural quality hinges. Suitable for both interior and exterior applications.

## Braille Signage (BRS1700, BRS1701, BRS1703, BRS1706)

Each plate consists of embossed tactile design, English text and braille lettering. The embossed components use standard imagery and fonts to ensure vision impaired non-braille readers can decipher the sign.

## Door Stops (A250, A280, A350)

Lockwood offers door stops for wall and floor mounting with quality design, finish and appearance.



LOCKWOOD FLUSH BOLT



YALE FLUSH BOLT



FLUSH PULLS



TOILET INDICATOR



HINGES



BRAILLE SIGNAGE



DOOR STOPS





ASSA ABLOY is the global leader in door opening solutions, dedicated to satisfying end-user needs for security, safety and convenience



Yale is one of the oldest international brands in the world and probably the best-known name in the locking industry. The Yale history captures major innovations that have marked the evolution not just of Yale, but of the entire locking industry.

With an unparalleled global reach and range of products, Yale reassures more people in more countries than any other consumer locking brand.



Lockwood is the leading brand in the Australasian locking industry. With a well-established reputation for high quality products, this iconic brand provides a wide range of locking solutions to residential housing, commercial building and industrial application markets.

**HENDERSON**

Established in 1921, PC Henderson has long been acknowledged as a world leader in the design and manufacture of Sliding Gear Systems for domestic, commercial and industrial applications involving sliding and folding doors.

**ASSA ABLOY**

ASSA ABLOY is the global leader in door opening solutions, dedicated to satisfying end-user needs for security, safety and convenience.

ASSA ABLOY is represented in all major regions, in both mature and emerging markets, with leading positions in New Zealand, Australia, Europe and North America.

As the world's leading lock group, ASSA ABLOY offers a more complete product range of door opening solutions than any other company in the market.

ASSA ABLOY New Zealand Ltd  
6 Armstrong Road  
Albany, Auckland, 0632  
New Zealand

[nzsales@assaabloy.com](mailto:nzsales@assaabloy.com)  
[assaabloy.co.nz](http://assaabloy.co.nz)

