



**The Prox Rex<sup>®</sup>** (Touch to Exit) electronic switch is a touch sensitive switch unit designed for use with Access Control Systems and is an ideal replacement for conventional push buttons, door release buttons, call switches, etc. It has two sets of N/C, N/O contacts, a built in sounder and operates on 12Vdc.



**The Press Rex<sup>®</sup>** (Press to Exit) operates in the same manner as the standard Prox Rex (Touch to Exit) but offers the benefit of LED back lighting of the silicone button. The button is sized for ease of operation and can easily be seen in areas of limited lighting. It operates from 10 - 30Vdc.



**The Em Rex<sup>®</sup>** (Emergency Exit Device) is an emergency door release unit which can be used on its own or in conjunction with Prox Rex<sup>®</sup> or Press Rex<sup>®</sup> to make up a total access controlled exit solution. It has a built in sounder, two sets of N/C, N/O contacts. Operates on 12Vdc.



**The Smart Em Rex<sup>®</sup>** operates in the same manner as the standard Em Rex<sup>®</sup> but offers the benefit of being LED back litting which allows for both easy location and operation in areas of limited lighting. Operates from 10 - 30Vdc.



### Em Rex Reset Tool

One is supplied with every Em Rex unit



**The Em Cover** is for use with either the Em Rex® or Smart Em Rex® to deter unintended or malicious activation of the unit when installed in public areas. The Em Cover comes in both un-monitored and monitored configurations. The monitored version has two outputs which can be used to monitor the operation of the cover.



**The Vertical Double Surround** allows for the Prox Rex / Press Rex and Em Rex / Smart Em Rex to be mounted one above the other for a neat and tidy installation. There is also an optional double mounting flush box to allow for easy fixing to plaster board.



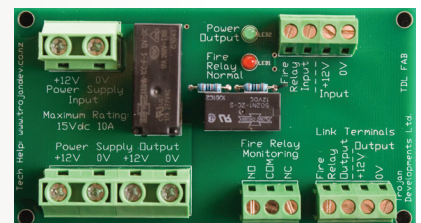
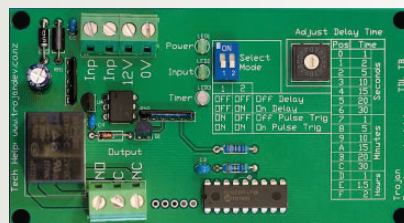
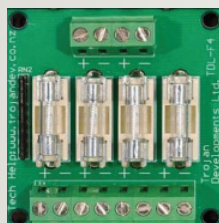
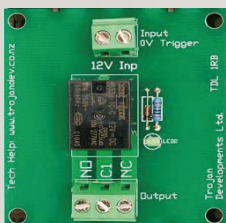
**The Vertical Double Surface Mount** is for areas where it is not possible to flush mount the Prox Rex, Press Rex, Em Rex and Smart Em Rex. This gives you a neat and professional finish to a surface mounting situation.



**Vertical Double Flush Box** is used to install the Trojan egress products in a vertical format in plaster board walls. The vertical double flush box can be used in conjunction with the Vertical Double Surround.



**Single Surrounds**  
They fit in the same way as the surround that comes with the product so it is an easy case of un-clipping one and clipping the new one on.



In addition, we manufacture a range of Relay, Fuse and Timer Boards which are of a unique design to make the installation of Access Control Systems a lot simpler and quicker than using conventional PCBs.