

Milesight

AI Motorized Dome Network Camera

NDA A

IP67

Motorized Lens



DATASHEET

KEY FEATURES

- ▶ NDA A Compliance (The fully NDA A-compliant products are well suited for government, defense and a range of projects subject to the NDA A.)
- ▶ 0.005Lux Starlight (Deliver high detailed color images even in low light environment reaching 0.005Lux.)
- ▶ Advanced Functions (Boasting to support various advanced functions such as HLC, Defog, ROI.)
- ▶ Built-in Microphone (Supporting audio function to hear what is happening in front of the camera.)
- ▶ SIP (Session Initiation Protocol. Providing audio/alarm/intercom and video streaming for mobile phones and video phones.)
- ▶ 3-Axis Mechanical Design (Featuring 3-axis mechanical design for fast and easy adjustment of the camera's viewing angle.)
- ▶ 1TB (Supporting ultra-large external microSD/SDHC/SDXC card storage up to 1TB.)
- ▶ Smart Stream (Bandwidth, storage and bit rate save with Smart Stream ON, eg, H.265+ saves 70%~80% bandwidth of H.264.)

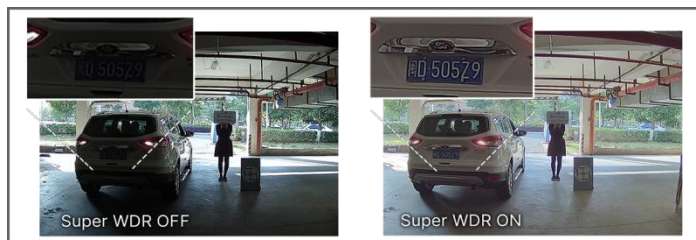
AI Video Analytics

The AI Camera Series can intelligently filter objects to focus on human and vehicle detection in multiple events such as Region Entrance, Region Exiting, Loitering, Advanced Motion Detection, etc.



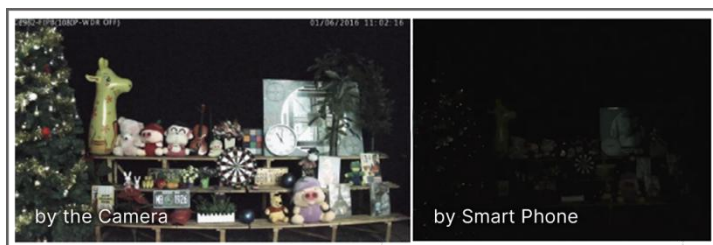
120dB Super WDR

Sensor-based WDR technology allows the camera to record greater scene details with true color reproduction even under the extreme back light and high contrast conditions. The ratio that the brightest light signal values divided by the darkest light signal values is up to 120dB.



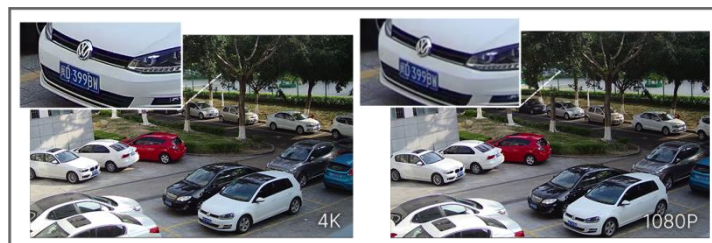
0.005Lux Ultra Low-light

The starlight camera is able to deliver high detailed color images even in low light environment reaching 0.005Lux(Color) or 0Lux(B/W), and near infrared light environments without any supplementary lighting.



4K Video Viewing Experience

The camera performs well in catching detailed image with 4K HD resolution regardless of the moving speed.



AI Motorized Dome Network Camera



| | Model | MS-C2975-(R)FPD (2MP) | MS-C4575-FPD (4MP) |
|-----------|-----------------------|--|--|
| Camera | Image Sensor | 1/2.8" Progressive Scan CMOS | |
| | Min. Illumination | Color: 0.005Lux@F1.4 B/W: 0Lux with IR on | |
| | WDR | 120dB Super WDR | |
| | Shutter Time | 1/100000s~1s | |
| | IR Distance | Up to 50m | |
| | Day/Night Mode | Day/Night/Auto/Customize/Schedule | |
| | S/N | >55dB | |
| Lens | Lens | Motorized 2.7~13.5mm/7~22mm@F1.4 | |
| | Field of View | H111°~H34°/D130°~D39°/ V60°~V19°(2.7~13.5mm) H42°~H17°/D48°~D19°/ V24°~V9°(7~22mm) | H97°~H28°/D110°~D32°/ V55°~V16°(2.7~13.5mm) H39°~H16°/D45°~D20°/ V22°~V9°(7~22mm) |
| | Mount | Φ14 | |
| | Focus Control | Auto/Manual | |
| Video | Max. Image Resolution | 1920x1080 | 2688x1520 |
| | Primary Stream | 60Hz: 60fps@ (1920x1080) (Optional for R Series) , 30fps@ (1920x1080, 1280x960, 1280x720, 704x576) 50Hz: 50fps@ (1920x1080) (Optional for R Series) , 25fps@ (1920x1080, 1280x960, 1280x720, 704x576) | 60Hz: 30fps@ (2688x1520, 2304x1296, 1920x1080, 1280x720) 50Hz: 25fps@ (2688x1520, 2304x1296, 1920x1080, 1280x720) |
| | Secondary Stream | 60Hz: 30fps@ (704x576, 640x480, 640x360, 352x288) 50Hz: 25fps@ (704x576, 640x480, 640x360, 352x288) | 60Hz: 30fps@ (1280x720, 704x576, 640x480) 50Hz: 25fps@ (1280x720, 704x576, 640x480) |
| | Tertiary Stream | 60Hz: 30fps@ (1280x720, 704x576, 640x480, 640x360, 352x288) 50Hz: 25fps@ (1280x720, 704x576, 640x480, 640x360, 352x288) | 60Hz: 30fps@ (1280x720, 704x576, 640x480) 50Hz: 25fps@ (1280x720, 704x576, 640x480) |
| | Video Compression | H.265*/H.265(HEVC)/H.264*/H.264/MJPEG | |
| | Video Bit Rate | 16Kbps~16Mbps(CBR/VBR Adjustable) | |
| | Privacy Masking | Up to 4 areas | |
| | ROI | Up to 8 areas | |
| | Image Setting | Brightness/Contrast/Saturation/Sharpness | |
| Interface | Ethernet | 1*RJ45 10M/100M Ethernet Port | |
| | Audio I/O | Built-in Microphone; 1/1 (Multi-interface Version) | |
| | Alarm I/O | 1/1 (Multi-interface Version) | |

AI Motorized Dome Network Camera



| | | | |
|------------------------------|-------------------------|--|-----------------------------------|
| Network | Network Storage | NAS(Support NFS, SMB/CIFS), ANR | |
| | Protocol | IPv4/IPv6, ARP, TCP, UDP, RTCP, RTP, RTSP, RTMP, HTTP, HTTPS, DNS, DDNS, DHCP, FTP, NTP, SMTP, SNMP, UPnP, Bonjour, SIP, PPPoE, VLAN, 802.1x, QoS, IGMP, ICMP, SSL,TLS 1.2 | |
| Audio | Audio Compression | G.711/AAC/G.722/G.726 | |
| | Audio Sampling Rate | 8/16/32/48KHz | |
| | Audio Bit Rate | 16~256kbps | |
| | Two-way Audio | Support | |
| Intelligent Analytics | Video Analysis | Region Entrance, Region Exiting, Advanced Motion Detection, Tamper Detection, Line Crossing, Loitering, Object Left, Object Removed | |
| | People Counting &Report | Count the number of people entering or exiting | |
| System | Storage | Support microSD/SDHC/SDXC Card Local Storage, up to 1TB | |
| | Advanced Function | BLC, HLC, 2D DNR, 3D DNR, Defog, AWB, IP Address Filtering, AGC, Anti-flicker, Corridor Mode, Deblur | |
| | SIP/VoIP Support | Yes, Voice & Video-over-IP | |
| | Event Trigger | Motion Detection, Network Disconnection, External Input, Audio Alarm, etc. | |
| | Event Action | FTP Upload, SMTP Upload, SD Card Record, External Output, SIP Phone, HTTP Notification, etc. | |
| | System Compatibility | ONVIF Profile G & S & T, API | |
| General | Working Temperature | -40℃~60℃ | |
| | Working Humidity | 0~90%(Non-condensing) | |
| | Power Supply | PoE (802.3af); PoE (802.3af) / DC 12V±10% (Multi-interface Version) | |
| | Power Consumption | 5.2W MAX 6.4W MAX (With IR on) | 5.5W MAX 6.5W MAX (With IR on) |
| | Housing | Vandal-proof IK10-rated Metal Housing / Up to IP67-rated for Weather-resistant Performance | |
| | Weight | 780g | |
| | Dimensions | Φ130mmX115mm | |
| | Warranty | 3/5 Years | |

AI Motorized Dome Network Camera



| | Model | MS-C5375-FPD (5MP) | MS-C8175-(S)FPD (4K) |
|-----------|-----------------------|--|--|
| Camera | Image Sensor | 1/2.8" Progressive Scan CMOS | |
| | Min. Illumination | Color: 0.008Lux@F1.4 B/W: 0Lux with IR on | Color: 0.012Lux@F1.4 B/W: 0Lux with IR on |
| | WDR | 120dB Super WDR | |
| | Shutter Time | 1/100000s~1s | |
| | IR Distance | Up to 50m | |
| | Day/Night Mode | Day/Night/Auto/Customize/Schedule | |
| | S/N | >55dB | |
| Lens | Lens | Motorized 2.7~13.5mm/7~22mm@F1.4 | |
| | Field of View | H99°~H31°/D124°~D38°/ V72°~V23°(2.7~13.5mm) H37°~H15°/D46°~D19°/ V28°~V11°(7~22mm) | H107°~H33°/D125°~D37° /V58°~V18° |
| | Mount | Φ14 | |
| | Focus Control | Auto/Manual | |
| | Iris Control | - | |
| Video | Max. Image Resolution | 2592x1944 | 3840x2160 |
| | Primary Stream | 60Hz: 30fps@(2592x1944, 2048x1536, 1920x1080, 1280x960, 1280x720, 704x576) 50Hz: 25fps@(2592x1944, 2048x1536, 1920x1080, 1280x960, 1280x720, 704x576) | 60Hz/50Hz: 30fps@(3840x2160, 3072x2048, 2592x1944, 2592x1520, 2048x1536, 1920x1080, 1280x960, 1280x720, 704x576), 20fps(3840x2160)(Optional for S Series) |
| | Secondary Stream | 60Hz: 30fps@(704x576, 640x480, 640x360, 352x288) 50Hz: 25fps@(704x576, 640x480, 640x360, 352x288) | |
| | Tertiary Stream | 60Hz: 30fps@(1280x720, 704x576, 640x480, 640x360, 352x288) 50Hz: 25fps@(1280x720, 704x576, 640x480, 640x360, 352x288) | |
| | Video Compression | H.265+/H.265(HEVC)/H.264+/H.264/MJPEG | |
| | Video Bit Rate | 16Kbps~16Mbps(CBR/VBR Adjustable) | |
| | Privacy Masking | Up to 4 areas | |
| | ROI | Up to 8 areas | |
| | Image Setting | Brightness/Contrast/Saturation/Sharpness | |
| Interface | Ethernet | 1*RJ45 10M/100M Ethernet Port | |
| | Audio I/O | Built-in Microphone; 1/1 (Multi-interface Version) | |
| | Alarm I/O | 1/1 (Multi-interface Version) | |

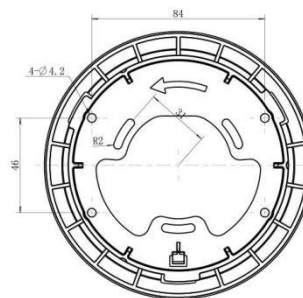
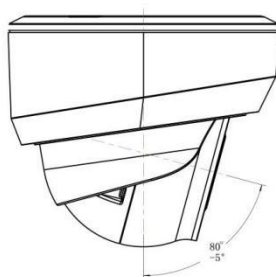
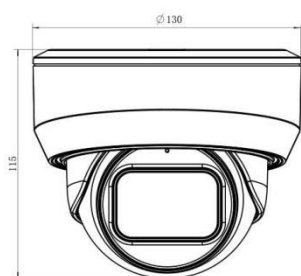
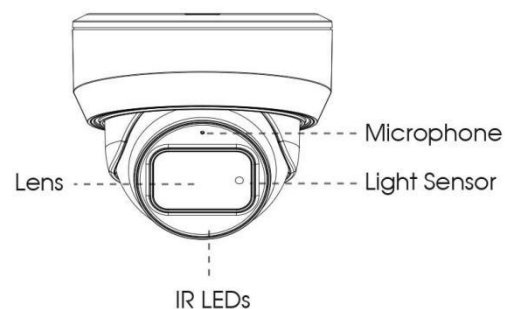
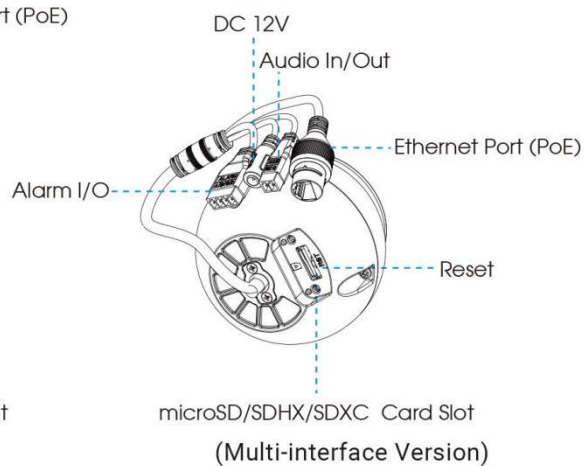
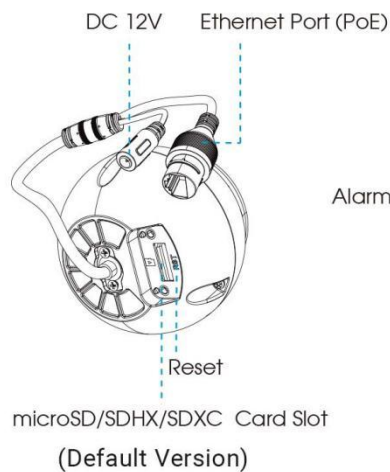
AI Motorized Dome Network Camera



| | | | |
|------------------------------|-------------------------|---|-----------------------------------|
| Network | Network Storage | NAS(Support NFS, SMB/CIFS), ANR | |
| | Protocol | IPv4/IPv6, ARP, TCP, UDP, RTCP, RTP, RTSP, RTMP, HTTP, HTTPS, DNS, DDNS, DHCP, FTP, NTP, SMTP, SNMP, UPnP, Bonjour, SIP, PPPoE, VLAN, 802.1x, QoS, IGMP, ICMP, SSL, TLS 1.2 | |
| Audio | Audio Compression | G.711/AAC/G.722/G.726 | |
| | Audio Sampling Rate | 8/16/32/48KHz | |
| | Audio Bit Rate | 16~256kbps | |
| | Two-way Audio | Support | |
| Intelligent Analytics | Video Analysis | Region Entrance, Region Exiting, Advanced Motion Detection, Tamper Detection, Line Crossing, Loitering, Object Left, Object Removed | |
| | People Counting &Report | Count the number of people entering or exiting | |
| System | Storage | Support microSD/SDHC/SDXC Card Local Storage, up to 1TB | |
| | Advanced Function | BLC, HLC, 2D DNR, 3D DNR, Defog, AWB, IP Address Filtering, AGC, Anti-flicker, Corridor Mode, Deblur | |
| | SIP/VoIP Support | Yes, Voice & Video-over-IP | |
| | Event Trigger | Motion Detection, Network Disconnection, External Input, Audio Alarm, etc. | |
| | Event Action | FTP Upload, SMTP Upload, SD Card Record, External Output, SIP Phone, HTTP Notification, etc. | |
| | System Compatibility | ONVIF Profile G & S & T, API | |
| General | Working Temperature | -40℃~60℃ | |
| | Working Humidity | 0~90%(Non-condensing) | |
| | Power Supply | PoE (802.3af); PoE (802.3af) / DC 12V±10% (Multi-interface Version) | |
| | Power Consumption | 5.5W MAX 6.5W MAX (With IR on) | 7.4W MAX 8.4W MAX (With IR on) |
| | Housing | Vandal-proof IK10-rated Metal Housing / Up to IP67-rated for Weather-resistant Performance | |
| | Weight | 780g | |
| | Dimensions | Φ130mmX115mm | |
| | Warranty | 3/5 Years | |



Structure Diagrams



Units: mm

Accessories Support

A01 Pole Mount

Weight: 720g
Dimensions: 170*51.5*152.6mm



A03 External Corner Bracket

Weight: 900g
Dimensions: 170*152.5*76.3mm



A71 Wall Mount

Weight: 530g
Dimensions: 162*124*78 mm

