

**Lockin**

Made for life.

At Lockin, we create locker spaces that free up every person to live, work and enjoy activities to the full.

Though there are currently no legislative requirements for locker design, to us it's important that our products meet the intent of the Disability Discrimination Act (DDA) and the applicable Australian Building Standards.

While our accessible lockers are the correct width, depth and height to ensure optimal usability, accessibility goes beyond the product itself. A truly accessible space takes the whole experience into consideration - from entry to exit. That's why here you'll find our range of DDA approved products, locks and accessories, alongside an overview of the space requirements that meet DDA building standards.

Whatever your circumstances, the spaces we create are truly made for life.

## Contents

Introduction	2
What are accessible lockers?	3
Designing accessible spaces	7
DDA locker space requirements	8
Luminance contrast	10
Accessible signage	11
Our accessible range	12
New accessible lockers	13
Accessible shelving lockers	14
Accessible hanging lockers	15
Accessible locker accessories	16
Accessible locker locks	18
Made for life	20
Say hello	22

What are

accessible

lockers?



### Let's start with DDA, what is it?

The federal Disability Discrimination Act 1992 provides protection for everyone in Australia against discrimination based on disability. In practice, the law applies in all areas of public life, including access to public premises.

### Why is it important?

Every public space or facility should be accessible to people with disabilities. It's one of the most fundamental of human rights – equal access for all. When we build accessible spaces, more experiences and opportunities open up to people with disabilities.

### Who does it cover?

The DDA defines a person with a disability as someone who has 'a physical and/or mental impairment that has a large and long-term negative effect on their ability to carry out normal day-to-day activities'. It's a broad definition, and one that ensures protection for everyone with a disability.

How do well-designed accessible spaces help you?

“Those spaces are life-changing. A place that is not designed for accessibility is a place that doesn’t exist.”

Alicia

Wheelchair user

Age: 38

### What are DDA compliant lockers?

To be DDA compliant, our lockers have specific reach, depth and height dimensions. Making them functional for people with a physical disability.

Our DDA range is not only for wheelchair users. Each product is also designed for walking frame users, people with low mobility or dexterity and people who are vision impaired.

### About the Lockin DDA range

Through collaboration with accessibility consultants Equal Access, we've developed a new product range that is DDA compliant and meets the human needs of those with disabilities. Our range include lockers, locks, signage, accessories and seating.



Designing

accessible

spaces

## Space requirements

To create a DDA locker space, you must consider how people with a disability will use the facility as a whole.

Beyond the product itself, we must look at the whole experience, from entry to exit. Space to manoeuvre or 'accessible paths of travel' are an important consideration. The graphic on the following page illustrates some of the most important accessible paths of travel measurements.

### Important note about accessible paths of travel

Accessible paths of travel must not be obstructed by fittings and fixtures such as lights, windows, awnings, skirting boards, telephones, fire hose reels, switchboards or similar objects. This also includes door handles and locks that are positioned below 900 mm above finished floor level.

Along the path of travel, doorways, steps, turnstiles, escalators, curved ramps or similar will disrupt the continuous accessible path. When encountered, these obstructions have their own minimum clearance requirements which must be met to reach DDA acceptance.

Vertically, the minimum unobstructed height of an accessible path of travel shall be 2000 mm or 1980 mm at doorways.



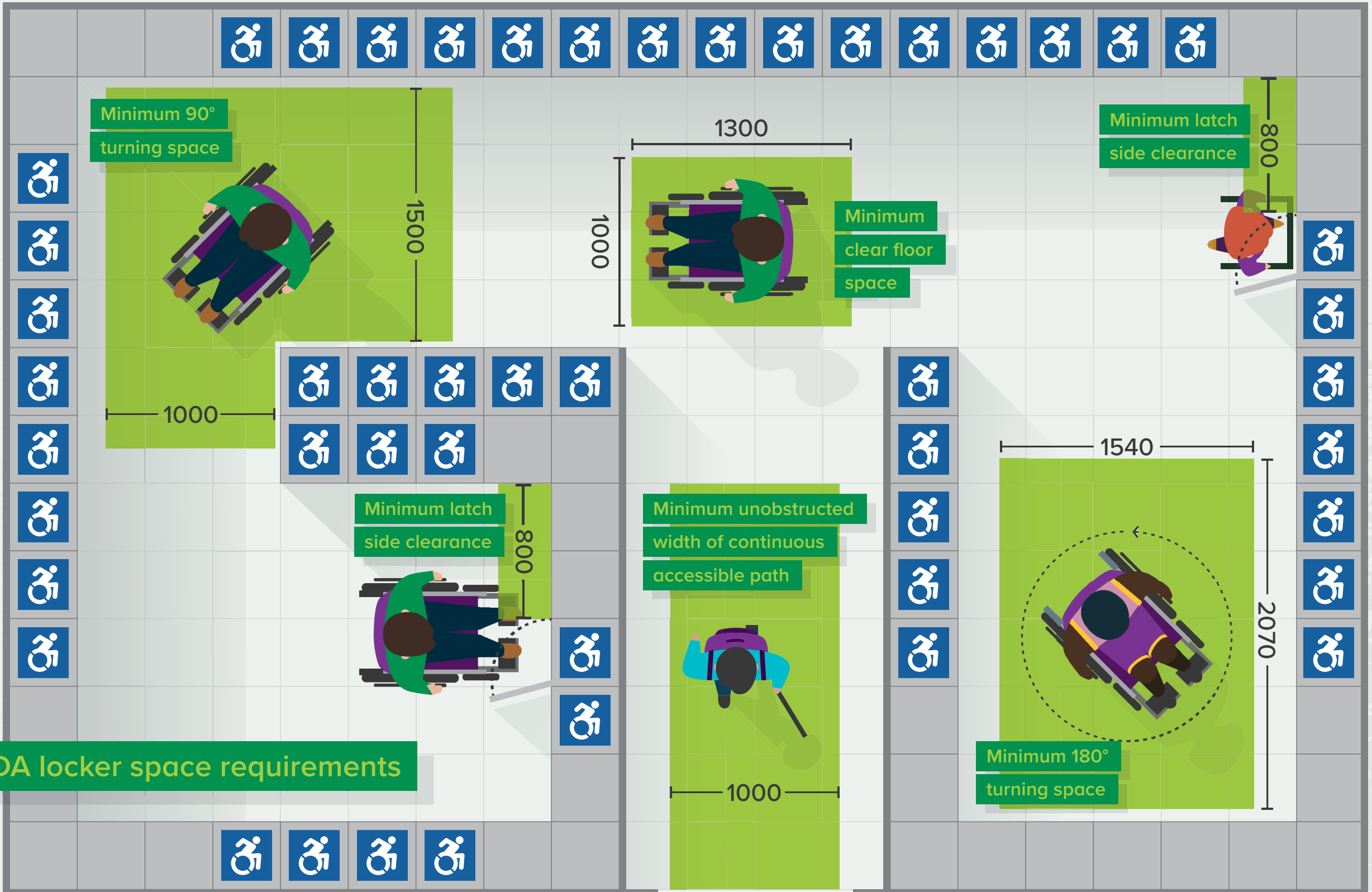


Standard locker

Accessible locker

Minimum requirements

Note: Lockers in this illustration are hinged on the right hand side



DDA locker space requirements

## Luminance contrast

The Building Code of Australia and the National Construction Code call for a 30% minimum luminance contrast in building elements along the accessible path of travel. This includes tactile indicators, signage, buttons, handles and doorways.

With over 300,000 people who are blind and/or vision impaired in Australia, the correct luminance contrast helps people with low vision to navigate their environment.

### What is luminance contrast?

Luminance contrast is the light reflected from one surface or component, compared to the light reflected from another surface or component. It is not the difference in the colour or the colour contrast.

There are two ways to measure the luminance contrast, in a laboratory or on-site.

### What are the luminance contrast requirements?

The luminance contrast of building elements must be more than 30%. But we recommend a 45% luminance contrast to make the environment as friendly as possible. This applies to locker doors, signage and accessories like locks and handles.

In general good matches for luminance contrast between accessories and doors can be achieved by pairing:



#### Black accessories

Are a good match for bright coloured, light wood grains and white and light tone doors.



#### Silver accessories

Are a good match for dark coloured doors, dark wood grains and on white.



#### White accessories

Are a good match for most colours or wood grains except for white and light tone doors.

## Accessible signage

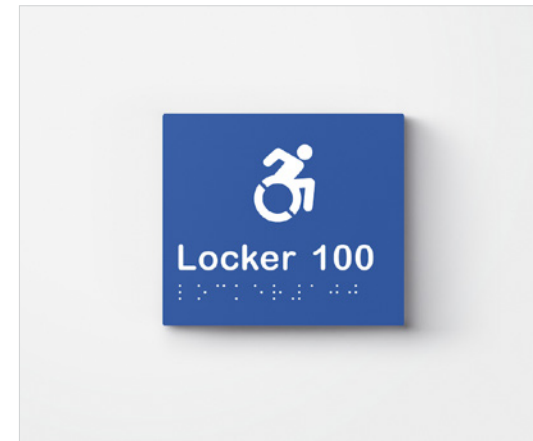
Good signage improves the experience disabled and non-disabled people have when accessing services.

Accessible signage must meet a range of criteria. This includes a 45% luminance contrast between surfaces and tactile characters and braille. This helps people who are vision impaired to navigate their environment.

### When is accessible signage required?

Accessible signage for lockers are not legally required. But we recommend signs to show which lockers are accessible.

Examples of accessible locker signs with braille and tactile characters



Ultramarine sign with white text



White sign with black text



Brushed silver sign with black text



Black sign with white text

Our

accessible

range

# New accessible lockers

The first of their kind, our DDA lockers are the right width, depth and height to ensure optimal usability. Designed for wheelchair and walking frame users. Designed for people with vision impairment. Designed for people with low mobility. The best accessible DDA locker for the office or change rooms.

## KEY FEATURES

- Shelving or hanging locker
- Fixed or adjustable shelving
- Customisable width, colours and materials

## POPULAR USES

Change rooms



End-of-trip



Office



Education



## STANDARD CONSTRUCTION

Body: E1 white or black HMR particle board with matching ABS edge

Doors: Laminex or Polytec laminate with matching ABS edge

Accessories: Accessible sign, d-pull handle

## ALP1

## ALH1



## PRODUCT SPECIFICATIONS (MM)

Code	H	W	D	Door height	Plinth height
ALP1	1350	400	550	900	450
ALH1	1350	400	400	900	450

Dimensions and specifications can be customised within DDA guidelines

# Accessible shelving lockers

Add a DDA locker into our existing shelving range. Our shelving lockers cater to a variety of work, education and active spaces. They're designed to store small to medium items such as laptops, bags and folders.

## KEY FEATURES

- Fixed or adjustable shelving
- Customisable dimensions, colours and materials

## POPULAR USES

Corporate office



Education



Workplace



Wellness studios



## STANDARD CONSTRUCTION

Body: E1 white or black HMR particle board with matching ABS edge

Doors: Laminex or Polytec laminate with matching ABS edge

Accessories (standard): Key lock, black pull handle and number tag

Accessories (DDA): Accessible sign, d-pull handle

## ALH3

## ALH4

## ALH5



## PRODUCT SPECIFICATIONS (MM)

Code	H	W	D	Door height	Plinth height
ALH3	1900	400	500	567	200
ALH4	1900	400	400	425	200
ALH5	1900	400	500	340	200

Dimensions and specifications can be customised within DDA guidelines

# Accessible hanging lockers

Add a DDA locker to the bottom row of our existing hanging range. Our hanging lockers cater for those with a busy work life schedule. Each locker combines hanging space with the ability to store large, bulky items. The range is available in both regular and tall heights.

## KEY FEATURES

- Fixed or adjustable shelving
- Customisable dimensions, colours and materials

## POPULAR USES

Gymnasiums



End-of-trip



Change rooms



Club rooms



## STANDARD CONSTRUCTION

Body: E1 white or black HMR particle board with matching ABS edge

Doors: Laminex or Polytec laminate with matching ABS edge

Accessories (standard): Key lock, black pull handle and number tag

Accessories (DDA): Accessible sign, d-pull handle

## ALP2

## ALPS2



## PRODUCT SPECIFICATIONS (MM)

Code	H	W	D	Door height	Plinth height
ALP2_19	1900	400	550	900	100
ALP2_21	2100	400	550	1000	100
ALPS2_19	1900	400	550	900 / 550	450
ALPS2_21	2100	400	550	1000 / 650	450

Dimensions and specifications can be customised within DDA guidelines

## Accessible locker accessories

At Lockin we know that the small details can make a big difference. That's why we offer a range of DDA accessories to make your locker space even better.

### IRONING BOARD

Ideal for change rooms, a compact iron and pull-out ironing board for DDA users. GPO points are installed in the top of the unit to power an iron.

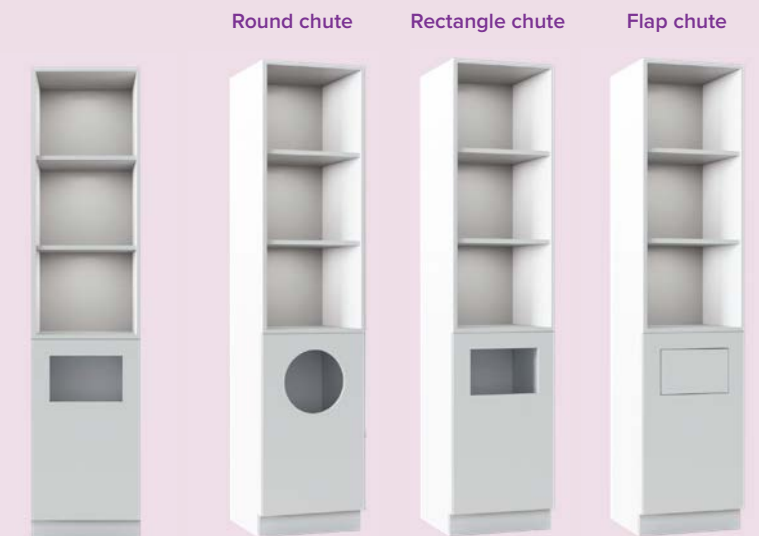


#### SPECIFICATIONS (MM)

Code	Description	H	W	D	Plinth height
ALIB	Accessible ironing station	1350	600	550	450

### TOWEL STORAGE UNIT

Perfect for change rooms or end-of-trip facilities. Comes with hooks inside cupboard to hang a laundry bag.



#### SPECIFICATIONS (MM)

Code	Description	H	W	D	Plinth height
TS_19	Towel storage	1900	400	550	100
TS_21	Towel storage – tall	2100	400	550	100

Dimensions and specifications can be customised within DDA guidelines





## TIMBER SEAT

Our bench seating range can be made to any length or colour with a variety of material options. Note that DDA compliant bench seats must be positioned against a wall or offer back support.



### SPECIFICATIONS (MM)

Code	Description	L	W	H	Rail height
S1	Single seat	1500	590	450	–
S2	Double seat	1500	1090	450	–
SR	Double seat with rail	1500	1090	450	1400

## AIRING CUPBOARD

Airing cupboards come with top and door ventilation to keep clothes and shoes dry. Also available with single hanging rail and wire baskets.



### SPECIFICATIONS (MM)

Code	Description	H	W	D	Plinth height
AC_19	Airing cupboard	1900	1000	550	100
AC_21	Airing cupboard - tall	2100	1000	550	100

Dimensions and specifications can be customised within DDA guidelines

# Accessible locker locks

Our DDA locks work with one hand and do not need tight grasping, pinching, or twisting to operate.

When choosing a lock, you must be sure to meet a luminance contrast of 30%. Though we recommend 45% for the best usability.

## Code locks

### CUE CODE LOCK

Type: Battery  
Mode: Dedicated / Shared  
Colour: Nickel



### ASPIRE CODE LOCK

Type: Battery  
Mode: Dedicated / Shared  
Colour: Black / Nickel



### OJMAR OCS LOCK

Type: Battery  
Mode: Dedicated / Shared  
Colour: Black / White



### OJMAR OCS PRO

Type: Battery  
Mode: Dedicated / Shared  
Colour: Black / Silver / White





## RFID locks

### CUE RFID LOCK

Type: Battery  
Mode: Dedicated / Shared  
Colour: Brushed nickel



### ASPIRE RFID LOCK

Type: Battery  
Mode: Dedicated / Shared  
Colour: Brushed nickel / Black



## Smart locks

### OJMAR NEXO

Type: Battery Wi-Fi  
Mode: Dedicated / Shared  
Colour: Black



### GANTNER

Type: Hardwired  
Mode: Dedicated / Shared  
Colour: Card / Light only



### LOQIT SYSTEM

Type: Hardwired  
Mode: Dedicated / Shared  
Colour: None (behind door)





Gymnasiums  
Wellness studios  
Club rooms



Aquatic centres  
Spa retreats  
Lifesaving clubs



Corporate office  
Education  
Workplace  
Public spaces



End-of-trip  
Change rooms  
Bike storage



# Made for life.



Aquatic centres  
Spa retreats  
Lifesaving clubs



Gymnasiums  
Wellness studios  
Club rooms

End-of-trip  
Change rooms  
Bike storage



Corporate office  
Education  
Workplace  
Public spaces



At Lockin we believe in building spaces that fit our lives – not the other way around. And that applies to everyone who uses our products, no matter their individual circumstances or abilities. That's why we've created our DDA range of products.

What we do is simple, but essential. We build well designed, custom lockers that take care of your gear and free you up to get on with your day. That's what we mean when we say we're made for life.

#### Credits

All Lockin DDA products have been assessed by accessibility consultants Equal Access, and comply with the following standards:

- *Disability Discrimination Act 1992 (DDA)*
- Commonwealth Disability (Access to Premises – Buildings) Standards 2010 (Premises Standards)
- Building Code of Australia, Volume 1, 2016 (BCA)
- Australian Standard AS 1428.1 (2009) - Design for access and mobility, Part 1: General requirements for access – New building work (AS 1428.1)
- Australian Standard AS 1428.2 (1992) - Design for Access and mobility Part 2: Enhanced and additional requirements - Buildings and facilities (AS 1428.2)
- Australian Standard AS 4586 (2013) Slip resistance classification of new pedestrian surface materials (AS 4586)



# Say hello

Lockin Lockers

Australia

1300 LOCKIN  
contact@lockin.com.au

[lockin.com.au](http://lockin.com.au)

